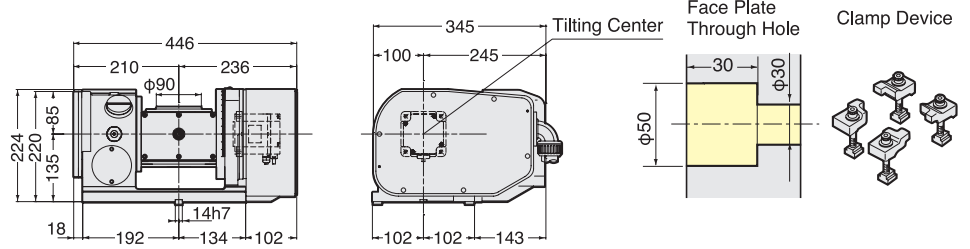


# Tilting Rotary Table with AR21 Controller



## 5AX-100WAR21



Motor capacity of rotary axis and tilting axis are added at the end of Code No. e.g 5AX-100WAR21-0404

## 5AX-130WAR21

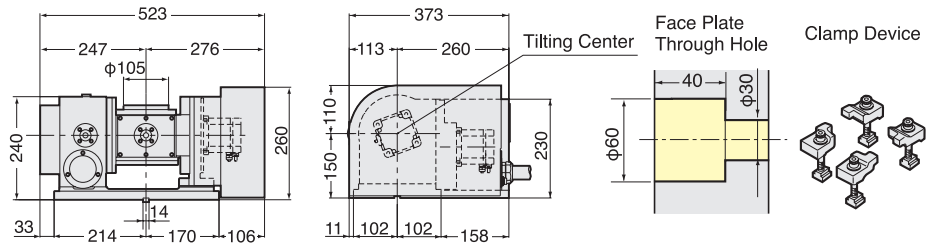
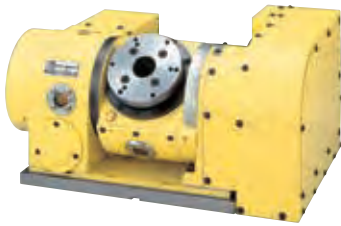
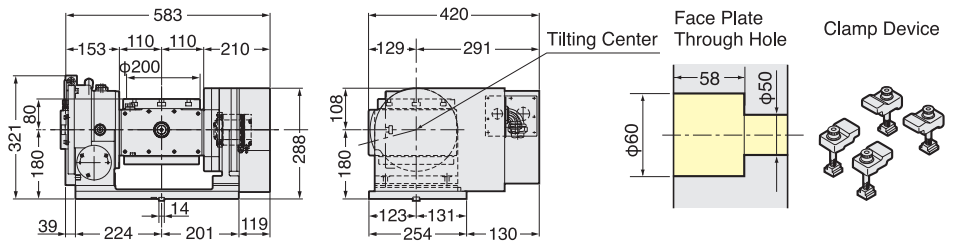
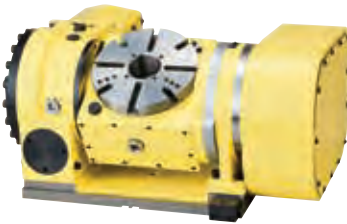


Photo with  $\phi 130$ mm plate.  
Rotary axis cable stays.

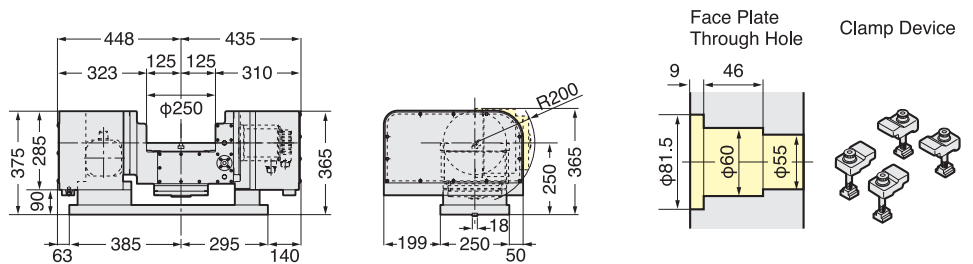
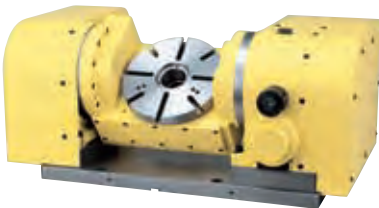
Motor capacity of rotary axis and tilting axis are added at the end of Code No. e.g 5AX-130WAR21-0404

## 5AX-201WAR21



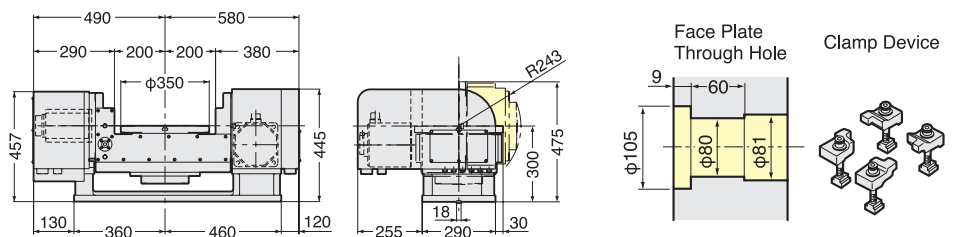
Motor capacity of rotary axis and tilting axis are added at the end of Code No. e.g 5AX-201WAR21-0408

## 5AX-250WAR21



Motor capacity of rotary axis and tilting axis are added at the end of Code No. e.g 5AX-250WAR21-1313

## 5AX-350WAR21



Motor capacity of rotary axis and tilting axis are added at the end of Code No. e.g 5AX-350WAR21-1318