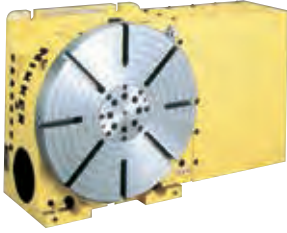


CNC ROTARY TABLE with AR21 CONTROLLER

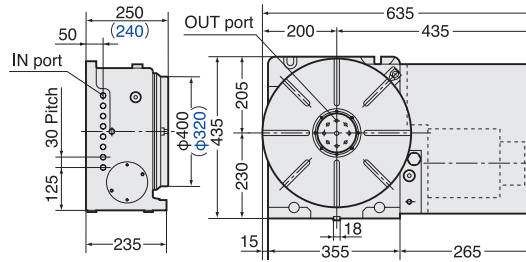


CNC321, 401AR21-18

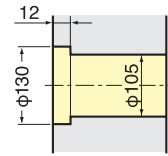
★ Built-in type rotary joint can be mounted, refer to P.89



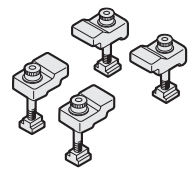
Rotary joint shown in photo is optional.



Face Plate Through Hole



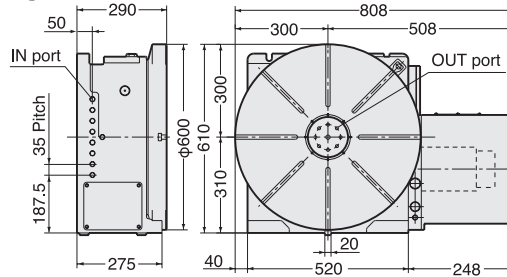
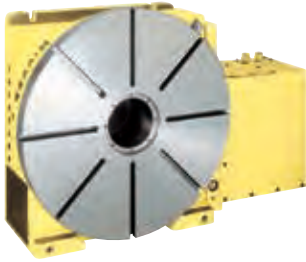
Clamp Device



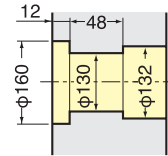
★ Please contact us for the dimension of CNC321AR21-18.

CNC501, 601, 802AR21-18

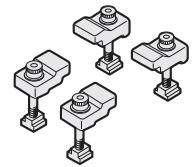
★ Built-in type rotary joint can be mounted, refer to P.89



Face Plate Through Hole

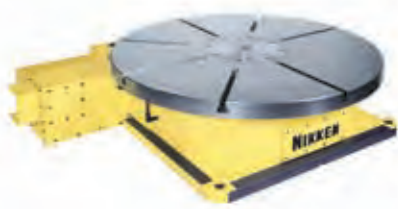


Clamp Device

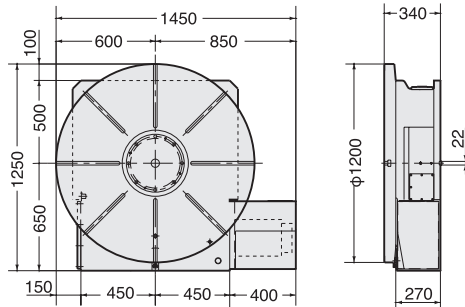


★ Please contact us for the dimension of CNC501, 802AR21-18.

CNC1000, 1200AR21



Center socket shown in photo is optional.

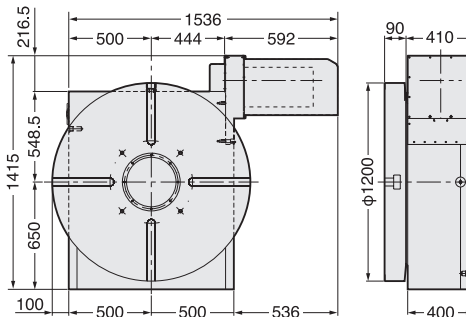
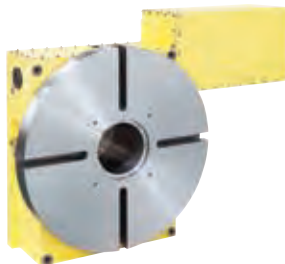


★ Ultra precision of $\pm 3\text{sec.}$ is available as an option. There is no through hole on the rotary table due to the rotary encoder for ultra precision option.

★ Please contact us for the dimension of CNC1000AR21.

★ Code No. will be varied according to the servo motor capacity, e.g CNC1000AR21-44 (4.4KW Motor)

CNC1201AR21

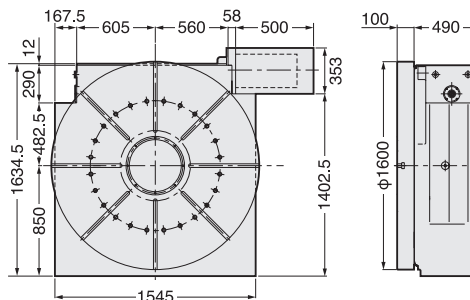
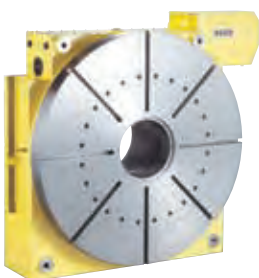


★ Ultra precision of $\pm 3\text{sec.}$ is available as an option. There is no through hole on the rotary table due to the rotary encoder for ultra precision option.

★ Please contact us for the dimension of CNC1000AR21.

★ Code No. will be varied according to the servo motor capacity, e.g CNC1201AR21-110 (11KW Motor)

CNC1600AR21



★ Ultra precision of $\pm 3\text{sec.}$ is available as an option. There is no through hole on the rotary table due to the rotary encoder for ultra precision option.

★ Please contact us for the dimension of CNC2000AR21.

★ Code No. will be varied according to the servo motor capacity, e.g CNC1600AR21-44 (5KW Motor)

The specification of the large rotary table will be varied according to your application.

1. With/without T slot, Width of T slot
2. Spindle hole dimension...Center socket for centering is normally installed.
3. Layout of the rotary table...Vertical use, horizontal use, vertical and horizontal use
4. Total reduction ratio...Suitable capacity of the servo motor can be selected.