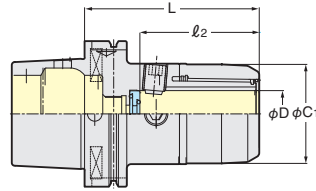
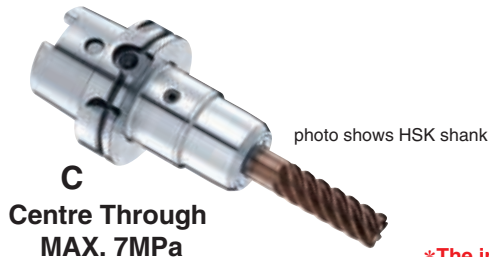


X-Treme shank 2LOCK NCAT/HSK X-Treme Chuck(INCH) NIKKEN



Explanation of the Code No.

HSK100A - C1 1/4EX - 120 - J

- HSK100A: Shank No.
- C1: X-Treme Chuck
- 1/4EX: Chucking Capacity
- 120: Symbol of Milling Chuck
- J: J-Type (Jet Groove)

*The inch series is a USA specification and is a semi-standard product.

PAT.

TAPER	Code No. (φD - L)	C ₁	L	l ₂	End mill with oil hole		Handle (Option)	Weight (kg)
					Stopper*	Face cap*		
NCAT50	NCAT50-C 1/2EX- 96U	40	96	58	9MC 1/2HEX- 6L	9C 1/2SL-FS-EX-A1	GH16	4.0
	-C 5/8EX-106U	48	106	68	9MC 5/8HEX-6.5L	9C 16SL-FS-EX-A1	GH20	4.4
	-C 3/4EX-106U	55	106	71	9MC 3/4HEX- 7L	9C 3/4-FS-EX-A1	GH25	5.0
	-C1 EX-111U	55	111.3	77.3	9MC 25HEX-6.2L	9C 1SL-FS-EX-A1	GH25	4.8
	-C1 1/4EX-116U	68	116.3	83.3	9MC1 1/4HEX- 7L	9C1 1/4SL-FS-EX-A1	GH32	5.3
	-C1 1/2EX-126U	86	126	86	9MC1 1/2HEX- 9L	9C1 1/2SL-FS-EX-A1	9HC42	6.6
HSK100A	HSK100A-C 1/2EX- 96	40	96	58	9MC 1/2HEX- 6L	9C 1/2SL-FS-EX-A1	GH16	2.7
	-C 5/8EX-106	48	106	68	9MC 5/8HEX-6.5L	9C 16SL-FS-EX-A1	GH20	3.0
	-C 3/4EX-116	55	116	71	9MC 3/4HEX- 7L	9C 3/4-FS-EX-A1	GH25	3.6
	-C1 EX-116	55	116.3	77.3	9MC 25HEX-6.2L	9C 1SL-FS-EX-A1	GH25	3.5
	-C1 1/4EX-121	68	121.3	83.3	9MC1 1/4HEX- 7L	9C1 1/4SL-FS-EX-A1	GH32	4.0
	-C1 1/2EX-136	86	136	86	9MC1 1/2HEX- 9L	9C1 1/2SL-FS-EX-A1	9HC42	5.7

Please use direct chucking without KM collet.

★MAX. 7MPa of center through coolant is available with the stopper.

★Please use J-type X-Treme chuck, when end mill without oil hole is used. eg) NBT50-C32EX-121-J

In case of J-type X-Treme chuck, J-type stopper and J-type face cap (with Jet grooves) are attached. 9MC32HEX-7L-J, 9C32L-FS-EX-J

J-type X-Treme chuck is used for the pocket milling and side milling.

★Extended length X-Treme chuck is also available. NBT50-C20EX-135, NBT50-C25EX-135, NBT50-C32EX-135



GH Handle P.52

Selection of the accessories

NIKKEN

Please select the proper stopper and the face cap according to your application. (end mill with/without coolant hole) The stopper and the face cap for the end mill with oil hole are attached as standard accessory.

Caution : No matter whether using internal coolant through or not, the stopper must be needed when gripping the end mill (If the stopper is not used it is not possible to demonstrate the maximum capacity of X-Treme CHUCK)

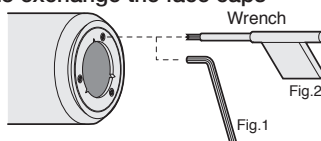
■Code No.

	End mill with oil hole		End mill without oil hole		Support bolt	Drive bolt
	Stopper	Face cap	Stopper	Face cap		
C12EX	9MC12HEX- 6L(8.5L)*1	9C12SL-FS-EX-A	9MC12HEX-6L(8.5L)*1-J	9C12SL-FS-EX-J	—	M10 × 16L-EX
C16EX	9MC16HEX-6.5L(9.5L)*1	9C16SL-FS-EX-A	9MC16HEX-6.5L(9.5L)*1-J	9C16SL-FS-EX-J		M12 × 16L-EX
*C20EX	9MC20HEX-12L(13.5L)*1	9C20 -FS-EX-A	9MC20HEX-12L(13.5L)*1-J	9C20 -FS-EX-J		M12 × 20L-EX
C25EX	9MC25HEX-6.2L(8.7L)*1	9C25SL-FS-EX-A	9MC25HEX-6.2L(8.7L)*1-J	9C25SL-FS-EX-J	FSMB16-20-H8	M16 × 20L-EX
C32EX	9MC32HEX-7L(10L)*1	9C32SL-FS-EX-A	9MC32HEX-7L(10L)*1-J	9C32SL-FS-EX-J		
C42EX	9MC42HEX-9L(11.5L)*1	9C42SL-FS-EX-A	9MC42HEX-9L(11.5L)*1-J	9C42SL-FS-EX-J		
	O-ring Please insert the stopper which small hole diameter is located at the end mill side. (C42EX: Same hole diameters)		Cross groove Please insert the stopper which cross groove is located at the end mill side.			

★★ Stopper for NBT40-C20EX, C8-C20EX, HSK63A-C20EX is 9MC20HEX-7L (with O-ring) or 9MC20HEX-7L-J.

★*1 The length in () is used for Code No. of extended stopper. eg. 9MC32HEX-10L If can be used, when the cutting length of end mill become shorter after re-grinding.

How to exchange the face caps

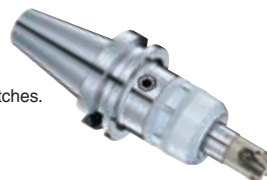


The face cap is fixed with 3 pieces of M2.5 screws. (C42EX: M3) The face cap must be centerized, when exchanged. The special centering jig fixture and wrench are provided as an option.

	wrench	screw
C12EX, C16EX, C20EX	CME-1.3 Fig.1	CBSS2.5-6
C25EX, C32EX	T-8 Fig.2	M2577
C42EX		SHIM-M3

★As a special specification, there is also an X-treme chuck that supports nuts with notches.

★For nut with notches, add "-A" at the end EX.) NBT50-C25EX-116-J-A



With notched nut X-Treme Chuck

■Code No. Handle for Notched nut

Chuck with notched nut	Handle
12EX-○○○-A	9HC16
16EX-○○○-A	9HC22
20EX-○○○-A	9HC25
25EX-○○○-A	9HC25
32EX-○○○-A	9HC32
42EX-○○○	9HC42

2Lock