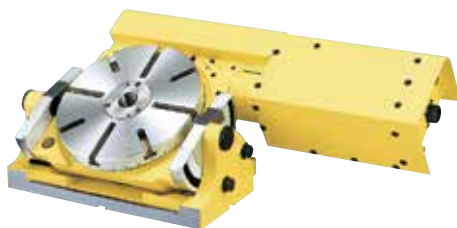


# NST250, 300, 500

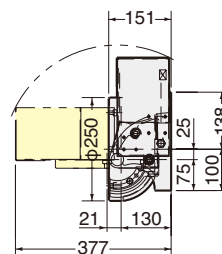
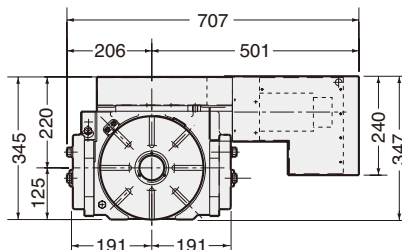


External dimensions depend on the type of the servo motor. Indicated dimensions are in case of FANUC. Please contact us for CAD files (2D:DXF, 3D:PARASOLID).

## NST250

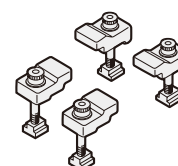
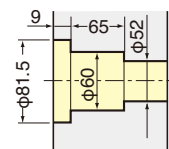


Center socket is included in the Photo. (optional)



Center height at 90° : 155mm

Face Plate Through Hole



Clamp Device

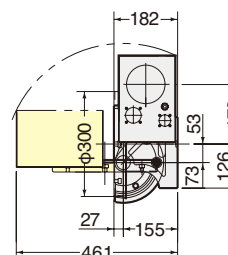
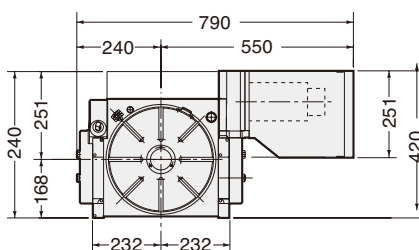


Guide key width: 18mm  
Table height in horizontal position: 151mm

## NST300

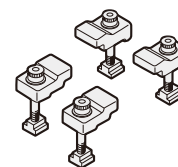
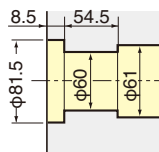


Center socket is included in the Photo. (optional)



Center height at 90° : 208mm

Face Plate Through Hole



Clamp Device

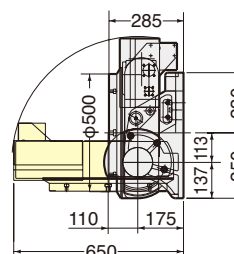
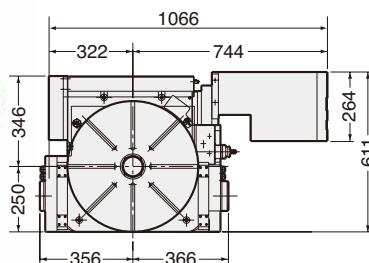


Guide key width: 18mm  
Table height in horizontal position: 182mm

## NST500

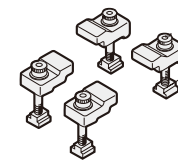
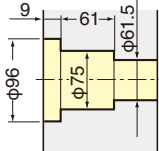


Center socket is included in the Photo. (optional)



Center height at 90° : 288mm

Face Plate Through Hole



Clamp Device



Guide key width: 18mm  
Table height in horizontal position: 285mm

CNC

NCT

NSV

NST

SAX

DD

BUILT-IN

MOTORS

M-SIGNAL

ACC

O/P

TEC

SERV