

# 3LOCK MBT MULTI LOCK MILLING CHUCK

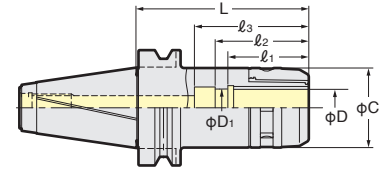
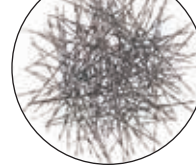


The cutting chips show us the actual machining capability.

Quiet, high speed, heavy milling



Stable finishing



**C**  
Centre Through  
MAX. 7MPa

## Standard

TAPER	Code No.	D	C	L	l <sub>1</sub>	l <sub>2</sub>	l <sub>3</sub>	Weight (kg)	Collet	
No.40	MBT40-C12- 90	12	33	90	48	53	58	1.6	KM12 CCK12	
	-120			1.9						
	-C16- 60	16	44	63	50	58	65	1.4	KM16 CCK16	
	- 90			90				1.7		
	-120			120				2.0		
	-C20- 70	20	52	71	57	66	80	1.6	KM20 CCK20 CCNK20 NK20	
	- 90			90				1.8		
	-120			120				2.2		
	-C25- 70	25	60	70	60	72	80	1.8	KM25 CCK25 CCNK25 NK25	
	- 90			90				2.1		
	-120			120				2.5		
	-C32- 85*	32	69	85	64	71	75	2.1	KM32 CCK32 CCNK32 NK32	
-105	105			2.5						
-120	120			2.8						
No.50	MBT50-C12-105	12	33	105	48	53	53	4.0	KM12 CCK12	
	-165			165				4.6		
	-C16-105	16	44	105	50	58	58	4.2	KM16 CCK16	
	-165			165				4.8		
	-200			200				5.1		
	-C20-105	20	52	105	57	66	66	4.5	KM20 CCK20 CCNK20 NK20	
	-165			165				5.1		
	-200			200				5.7		
	-C25-105	25	60	105	60	72	72	4.8	KM25 CCK25 CCNK25 NK25	
	-135			135				5.2		
	-165			165				5.6		
	-C32- 90	32	69	90	70	81	81	4.3	KM32 CCK32 CCNK32 NK32	
	-105			105				4.6		
	-120			120				5.1		
	-135			135				5.6		
	-165			165				6.4		
	-200			200				7.8		
	-250	250	9.2							
	-300	300	10.6							
	-C42- 95*	42	86	95	73	80	85	5.5	KM42 CCK42 CCNK42 NK42	
	-120			120				105		110
-135	135			7.2						
-165	165			8.6						
-200	200			9.5						
-250	250			11.7						
-300	300	14.0								

★Spanner is available as an option.

C12 : 9HC12A C16 : 9HC16 C20 : 9HC22  
C25 : 9HC25 C32 : 9HC32 C42 : 9HC42

★Please note the acceptable shank tolerance is h6~7.

★For heavy duty milling, please grip the cutter shank longer than l<sub>1</sub>.

★NK and CCNK collet can not be used for the chucks marked \*.

★For C32, l<sub>2</sub> dimension longer than standard is available.

MBT40-C32D- 105 MBT50-C32D- 105

★Centre through tool coolant is available for all models. When the cutter shank length is shorter than l<sub>1</sub>, please use the stopper for direct chucking or CCK/CCNK collet.

The Code No. of the Stopper for direct chucking is : C20 : 9MC20, C25 : 9MC25, C32 : 9MC32, C42 : 9MC42

★GFS type is possible only for C25 to C42, except for BT30.

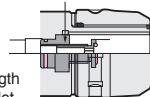
The GFS type is available with or without J grooves, and the code numbers are GFSJ for with J grooves and GFS for without grooves.

★Please refer P.36 for Milling Chuck Coolant Solution.

★Please refer P.177 for KM and CCK collet.

★Please add "F" for the flange through tool coolant type.

Stopper for Direct Chucking



Explanation of the Code No.

MBT40 - C20 - 70

●Nominal Gauge Length

●Chucking Capacity

●Symbol of Milling Chuck

●Shank No.