

2LOCK BALANCE-CUT BAC ADVANCED BORING ARBOR for LARGE DIA. JAPAN PAT.

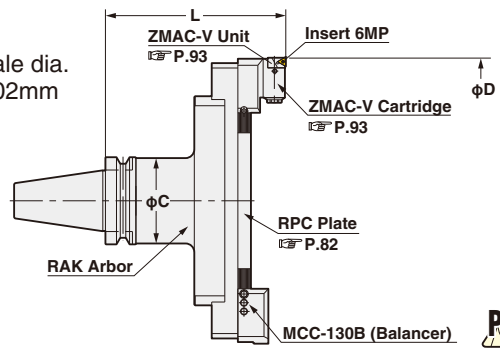
NIKKEN



BAC-V

For Finishing

- Min. dial read out: main scale dia. 0.02mm, sub scale dia. 0.002mm
- Boring Dia: $\phi 130 \sim 595\text{mm}$

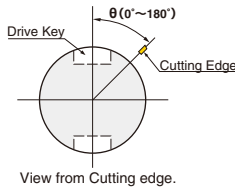


P.119

Boring Dia: $\phi 130 \sim 595\text{mm}$ for Finishing.

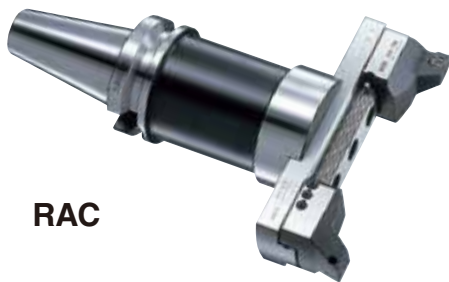
TAPER	Code.No	D		L	C	RAK Arbor Code No.	PPC Plante No	Cartridge (Balancer)	Weight (kg)
		MIN.	MAX.						
No.40	NBT40 -BAC130-205V	130	195	205	61	NBT40-RAK-130A	RPC-130		6.8
	(NIT40) -BAC180-205V	180	245						7.8
No.50	NBT50 -BAC130-185V, 235V, 285V	130	195	185, 235, 285	90	NBT50-RAK-110A, 160A, 210A	RPC-130	MCCZ-130V (MCC-130B) Insert Tip 6MP	13.0, 14.5, 17.5
	(NIT50) -BAC180-185V, 235V, 285V	180	245						13.5, 15.0, 18.0
	-BAC230-185V, 235V, 285V	230	295						14.0, 15.5, 18.5
	-BAC280-185V, 235V, 285V	280	345	14.5, 16.0, 19.0					
	-BAC330-210V*	330	395	210 (220*)	98	NBT50-RAK330-125 NIT50-RAK330-135*	RPC-330		16.2
	-BAC380-210V*	380	445						16.5
	-BAC430-210V*	430	495						17.5
	-BAC480-210V*	480	545						18.5
-BAC530-210V*	530	595	19.5						

- ★ "C" grade (Coated) Inserts are supplied as standard. ★ Please refer P.117 for cutting condition.
- ★ Unit "M5HZ-55V" is provided as standard, please refer P.82 for Arbor (RAK) and Plate (RPC).
- ★ Arbor, Plate and Cartridge are delivered in separate packages.
- ★ When ordering, please let us know machine maker and model no. to avoid the interference with tool magazine of ATC.
- ★ The location of cutting edge is same as drive key in standard.
- The different location is available, please specify θ in Code No. e.g. NBT50-BAC180-235V (90°)
- ★ The boring arbors marked*with NIT50, L (gauge length) is 220. e.g. NIT50-BAC330-220V



2LOCK BALANCE-CUT RAC BORING ARBOR for LARGE DIA. JAPAN PAT.

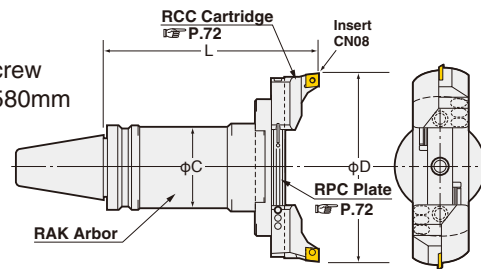
NIKKEN



RAC

For Roughing

- With slight adjust screw
- Boring Dia: $\phi 130 \sim 580\text{mm}$



P.74

Boring Dia: $\phi 130 \sim 580\text{mm}$ for Roughing.

TAPER	Code.No	D		L	C	RAK Arbor Code No.	PPC Plante No	Cartridge No. for Large dia.	Weight (kg)
		MIN.	MAX.						
No.40	NBT40 -RAC130-205	130	180	205	61	NBT40-RAK-130A	RPC-130		6.8
	(NIT40) -RAC180-205	180	230						7.8
No.50	NBT50 -RAC130-185, 235, 285	130	180	185, 235, 285	90	NBT50-RAK-110A, 160A, 210A	RPC-130	For Heavy Duty Boring of Iron and Cast Iron RCC-130 x2 Insert Tip CN08	11.3, 12.8, 15.8
	(NIT50) -RAC180-185, 235, 285	180	230						11.8, 13.3, 16.3
	-RAC230-185, 235, 285	230	280						12.3, 13.8, 16.8
	-RAC280-185, 235, 285	280	330	12.8, 14.3, 17.3					
	-RAC330-210*	330	380	210 (220*)	98	NBT50-RAK330-125 NIT50-RAK330-135*	RPC-330		15.5
	-RAC380-210*	380	430						16.5
	-RAC430-210*	430	480						17.5
	-RAC480-210*	480	530						18.5
-RAC530-210*	530	580	19.5						

- ★ The Code No. on above table are the boring arbors with RCC-130 cartridge (Insert tip: CN08) the Heavy Duty Boring of Iron and Cast Iron. Please refer P.116 for cutting condition.
- ★ Boring arbor with cartridges & insert for Steel, Stainless Steel and Cast Iron (E), for Aluminum (A) and for Through Hole & Multi Sheets (K) are available. Please refer P.82 for cartridges. e.g. NBT50-RAC130-185E
- ★ Arbor, Plate and Cartridge are delivered in separate packages. ★ When ordering, please let us know machine maker and model no. to avoid the interference with tool magazine of ATC.
- ★ The location of cutting edge is same as drive key in standard. The different location is available, please specify θ in Code No. e.g. NBT50-RAC180-235 (90°)
- ★ The boring arbors marked*with NIT50, L (gauge length) is 220. e.g. NIT50-RAC330-220