

# HSK ZMAC ADVANCED BORING ARBOR (ZMAC-V)



## Boring for Finishing



ZMAC-V

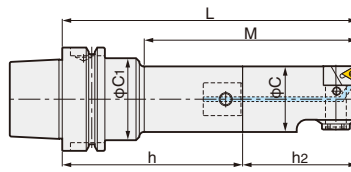


Fig.1

Only for ZMAC16-V

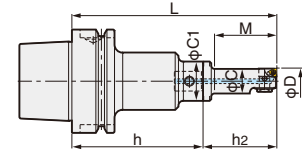


Fig.3

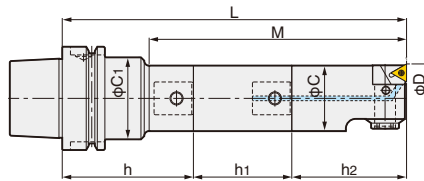


Fig.2

ZMAC100-V, 140-V

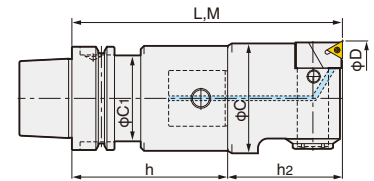


Fig.4

Code No. of the insert tip are shown.

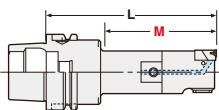
JAPAN PAT.

TAPER	Code No.	Boring Range D	Boring Depth M	C	C <sub>1</sub>	Shank Code No.	Extension Spacer Code No.	P.119		Weight (kg)	Fig
								Head No.	Insert No.		
HSK63A	HSK63A-ZMAC16-125V	15.8~20.2	38	15	24	HSK63A-Q12- 80	—	12-ZMAC16- 45V	3MP-C,B	1.6	3
	-135V		48					12-ZMAC16- 55V			
	-ZMAC20-120V	19.8~25.2	45	19	30	-Q 9- 80	—	9-ZMAC20- 40V		1.6	1
	-135V		67							1.6	
	-150V		75							1.7	
	-ZMAC25-120V	24.8~32.2	52	24	35	-Q12- 80	—	12-ZMAC25- 40V		1.7	1
	-150V		90							1.8	
	-165V		97							1.8	
	-ZMAC32-150V		77							—	
	-180V	110	2.4								
	-195V	122	SP16-16-45	2.4	4MP-C,B	2					
	-ZMAC42-150V	41.8~55.2	97	40			50	-Q20- 80		—	20-ZMAC42- 70V
	-180V		130		2.9						
	-210V		157		3.1						
	-ZMAC55-165V		54.8~70.2		135	53					
	-210V	180		4.3							
	-225V	195		4.3							
	-ZMAC70-165V	69.8~85.2		165	67		52.4	-Q34- 95		—	34-ZMAC70- 70V
	-180V		180	5.5							
	-225V		225	6.5							
-ZMAC85-195V	84.8~100.2		195	83		52.4			-Q42- 95		

★MIN. dial readout : ZMAC25-V & smaller is 0.02mm on diameter. ZMAC32-V and larger are 0.01mm on diameter.  
 ★"C" grade (Coated) insert for Steel, Stainless & Cast Iron is supplied as Standard with the head (Smooth boring & Long tool-life). P.119 Please refer P.117 for cutting condition.  
 We would recommend "B" grade (CBN) insert for Hardened Steel & High Speed boring of Cast Iron.

★Please refer P.283 for base holder, P.102 for spacer and P.87, P.88 for head.  
 ★Centre Through Tool Coolant function is available as standard.

★For HSK40A or 50A, modular connection system is applied. Please refer P.283 for Base Holder.  
 ★When L length is required longer than standard, please specify boring depth M.



■ Boring Arbor with Extension Spacer

■ ZMAC-V for Multi-Stage Boring Bar P.107

Please contact us for the special boring bar.



High Pressure Coolant Through Tool



# HSK ZMAC ADVANCED BORING ARBOR (ZMAC-V)



■ With ZMAC $\alpha$ -V Boring Head  
Please add "AA" at the end of Code No.  
e.g. HSK63A-ZMAC42-150AAV



ZMAC $\alpha$ -V

Diameter can be adjusted easily and quickly by new handle with wrench.



Unlock

Adjust diameter

Lock

Code No. of the insert tip are shown.

JAPAN PAT.

TAPER	Code No.	Boring Range D	Boring Depth M	C	C <sub>1</sub>	Shank Code No.	Extension Spacer Code No.	P.119		Weight (kg)	Fig	
								Head No.	Insert No.			
HSK100A	HSK100A-ZMAC 16-140V	15.8~20.2	38	15	24	HSK100A-Q12- 95	—	12-ZMAC 16- 45V	3MP-C,B	3.9	3	
	-150V		48					12-ZMAC 16- 55V				
	-ZMAC 20-150V	19.8~25.2	45	19	40	-Q 9-110	—	9-ZMAC 20- 40V	4MP-C,B	4.0	1	
	-165V		67									-Q 9-125N
	-180V		75									
	-ZMAC 25-135V		24.8~32.2									52
	-165V	90		-Q12-125								
	-180V	97			SP12-12-45							
	-ZMAC 32-180V	31.8~42.2		77	31	50	-Q16-125N	—	16-ZMAC 32- 55V	4MP-C,B	4.7	1
	-210V		110	-Q16-155								
	-225V		122									
	-ZMAC 42-180V		41.8~55.2	97								
	-195V	130		-Q20-125								
	-225V	142			SP20-20-45							
	-240V	157		SP20-20-60								
	-ZMAC 55-210V	54.8~70.2	117	53	65	-Q26-140	—	26-ZMAC 55- 70V	6MP-C,B	6.7	1	
	-240V		182									-Q26-170N
	-270V		177									
	-ZMAC 70-240V		69.8~85.2									187
	-270V	217		-Q34-200								
	-300V	247			SP34-34-60							
	-ZMAC 85-225V	84.8~100.2		187	83	—	-Q42-125	—	42-ZMAC 85-100V	6MP-C,B	11.7	1
	-290V		252	-Q42-190								
	-315V		277									
	-ZMAC100-225V		99.5~140.5	225								
	-290V	290		-Q42-190								
	-325V	325			-Q42-225A							
	-375V	375		-Q42-275A								
-ZMAC140-225V	139.5~180.5	225	135	98	-Q42-125	—	42-ZMAC140-100V	6MP-C,B	13.0	4		
-290V		290									-Q42-190	
-325V		325										-Q42-225A
-375V		375									-Q42-275A	
-425V	425	-Q42-325A										

★MIN. dial readout : ZMAC25-V & smaller is 0.02mm on diameter. ZMAC32-V and larger are 0.01mm on diameter.  
★When L length is required longer than standard, please specify boring depth M. ★Centre Through Tool Coolant function is available as standard.  
★"C" grade (Coated) insert for Steel, Stainless&Cast Iron is supplied as Standard with the head (Smooth boring & Long tool-life). P.119  
We would recommend "B" grade (CBN) insert for Hardened Steel & High Speed boring of Cast Iron. Please refer P.117 for cutting condition.  
★Please refer P.283 for base holder, P.102 for spacer and P.87, P.88 for head.