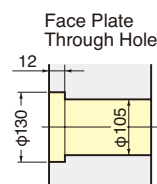
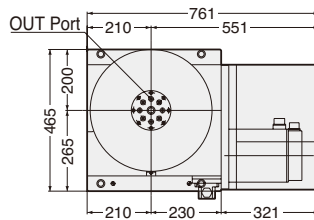
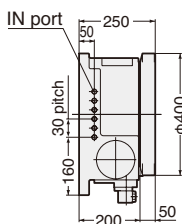
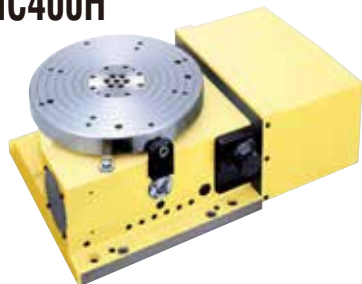


BUILT-IN BUILT-IN type CNC ROTARY TABLE

External dimensions depend on the type of the servo motor. Indicated dimensions are in case of FANUC. Please contact us for CAD files (2D:DXF, 3D:PARASOLID).

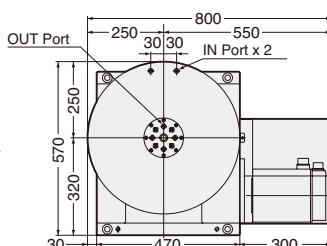
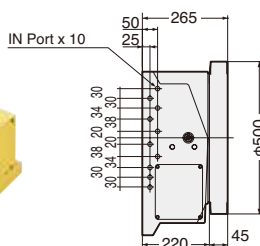
CNC400H



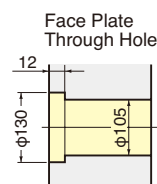
★Horizontal use only.

The table without Tslots is standard.

CNC503H



- 12 Ports Rotary Joint is standard.
- Suitable design for easy maintenance
- Economical price due to standardization



★Horizontal use only.

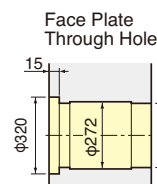
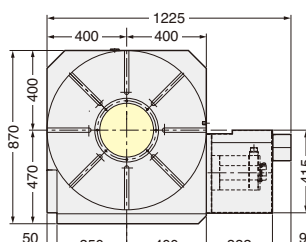
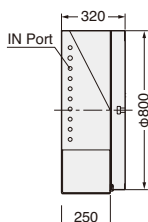
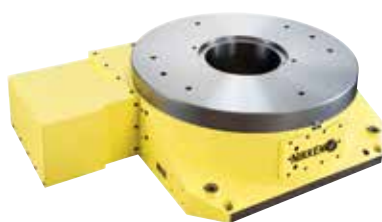
The table without Tslots is standard.

B-type and T-Type are now available. Please contact us for more detail.

CNC802

Ultra Big Bore (φ270mm) Specification

★ Built-in type rotary joint can be mounted on CNC802 refer to P.89



The table without Tslots is standard.

Specifications

Built-type CNC Rotary Tables are all semi-standard models. Please contact us.

():High Speed type Please contact us.

Item / Code No.		CNC400H CNCZ400H	CNC503H CNCZ503H	CNC802
Diameter of Table	φmm	φ400	φ500	φ800
Diameter of Spindle Hole	φmm	φ105	φ105	φ270 _{H7}
Clamping System	3.5MPa	Hydraulic	Hydraulic	Hydraulic
Clamping Torque	N·m	1470	1890	7000
Table Inertia at Motor Shaft ($\frac{GD^2}{4}$)	kg·m ² ×10 ⁻³	2.8	8	5.3
Servo Motor	min ⁻¹	α iF12·2000	α iF12·2000	α iF22·2000
MIN. Increment		0.001°	0.001°	0.001°
Rotation Speed	min ⁻¹	22.2(44.4)	16.6(33.3)	5.5
Total Reduction Ratio		1/90 (1/45)	1/120 (1/60)	1/360
Indexing Accuracy	sec	20	20	15
Net Weight	kg	295	400	1100
MAX. Work Load on the Table	Horizontal 	kg	800	3000
		N	53100	63720
MAX. Thrust Load applicable on the Table	*1	FXL N·m	2648	8563
		FXL N·m	3840	36260
MAX. Work Inertia	($\frac{GD^2}{4}$)	kg·m ²	16.6(8.3)	234
Driving Torque		N·m	432(345)	3168

*1 This is the strength of the worm wheel without brake. It is applied against dynamic cutting thrust.