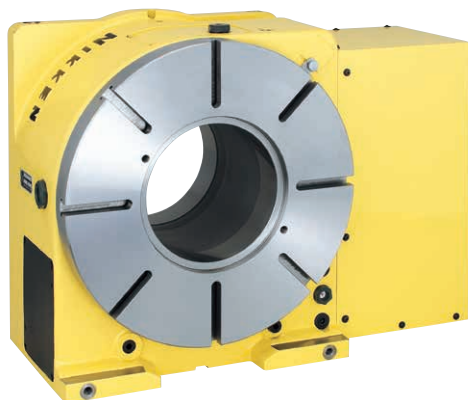
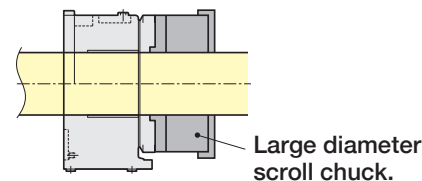


BIG BORE CNC ROTARY TABLE

NIKKEN

CNCB 450

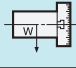



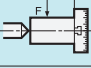
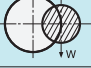
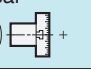

- Ideal for machining boring pipes for oil or natural gas
- Capable of cutting through-holes in work pieces
- Supports up to 20 + 1P rotary joint ports

Example for the utilization
for large diameter bar work



Specifications

BIG BORE CNC Rotary Tables are all semi-standard models. Please contact us.

Item / Code No.		CNCB350	CNCB450	CNCB630	
Diameter of Table	φmm	350	450	630	
Diameter of Spindle Hole	φmm	φ154H7	φ205H7	φ345H7	
Center Height	mm	230	280	380	
Width of T Slot	mm	14	14	14	
Clamping System		Hydraulic	Hydraulic	Hydraulic	
Clamping Torque	N·m	3331	3870	6550	
Table Inertia at Motor Shaft	$\left(\frac{GD^2}{4}\right) \text{ kg}\cdot\text{m}^2 \times 10^{-3}$	2.9	2.8	4.8	
Servo Motor	r/min	αiF12·2000	αiF12·2000	αiF22·2000	
MIN. Increment		0.001°	0.001°	0.001°	
Rotation Speed	r/min	22.2	16.6	11.1	
Total Reduction Ratio		1/90	1/120	1/180	
Indexing Accuracy	sec	15	15	15	
Net Weight	kg	245	330	750	
MAX. Work Load on the Table	Vertical 	kg	250	350	400
	Horizontal 	kg	500	700	800
MAX. Thrust Load applicable on the Table		N	5300	63720	250000
	*1 	FXL N·m	2648	3531	5297
		FXL N·m	3840	5990	33000
Guide Line of MAX. Unbalancing Load	*2 	N·m	100	150	300
MAX. Work Inertia	Vertical  + $\left(\frac{GD^2}{4}\right) \text{ kg}\cdot\text{m}^2$	$\text{kg}\cdot\text{m}^2$	6.4	17.0	40.0
Driving Torque	*3 	N·m	432	576	1584

*1 This is the strength of the worm wheel without brake. It is applied against dynamic cutting thrust.

*2 The guide line of MAX unbalancing load means the unbalancing load, when the rotary table is used with support table in vertical application. The guide line figure will be different according to the servo motor, please refer to P.57 for more detail.

*3 Driving torque means the torque at MAX. rotation speed after acceleration. Driving torque is almost constant and independent from the load except unbalancing load is applied.

★ Total reduction ratio of 1/180 is also available for CNCB450. ★ αiF22/4000 motor can be mounted on CNCB350, 450.