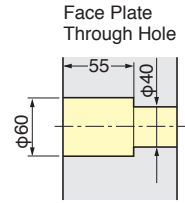
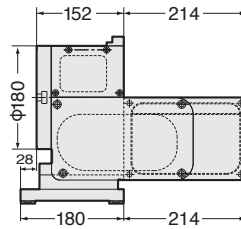
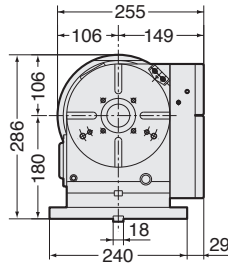


# CNC180B, 202B, 260B, 302B, 321B, 401B

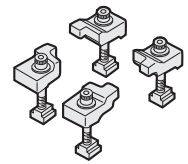


External dimensions depend on the type of the servo motor. Indicated dimensions are in case of FANUC. Please contact us for CAD files (2D:DXF, 3D:PARASOLID).

## CNC180B

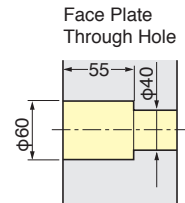
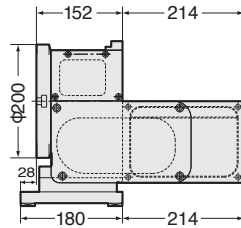
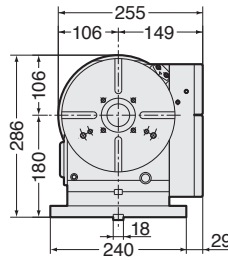


Clamp Device

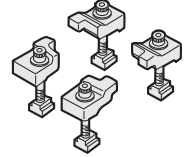


Air purge function is provided.

## CNC202B

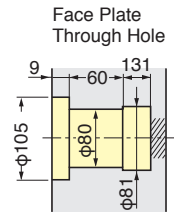
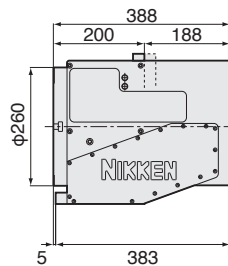
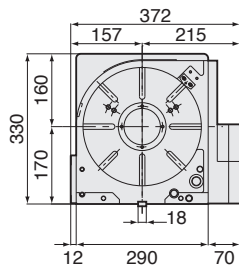
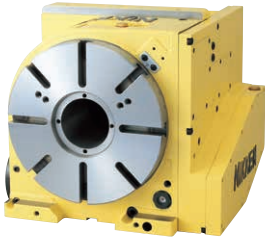


Clamp Device

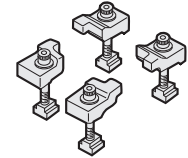


Air purge function is provided.

## CNC260B

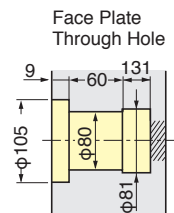
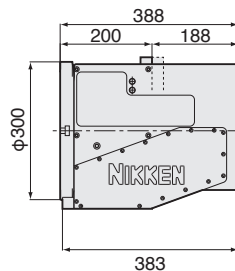
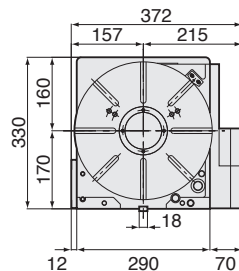
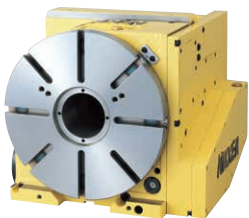


Clamp Device

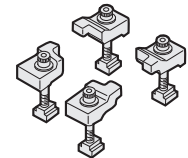


For the rotary table with pneumatic brake, air purge function is provided inside the motor cover as standard.

## CNC302B

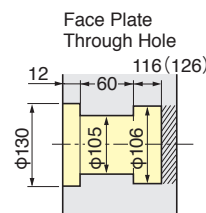
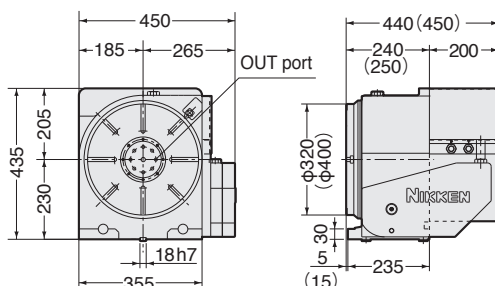


Clamp Device

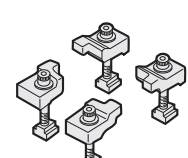


For the rotary table with pneumatic brake, air purge function is provided inside the motor cover as standard.

## CNC321B, CNC401B



Clamp Device



Center socket shown in photo & layout is optional.

IN ports are located in left side.  
( ) : CNC401B

★ Built-in type rotary joint can be mounted on CNC321B & 401B, refer to P.89