

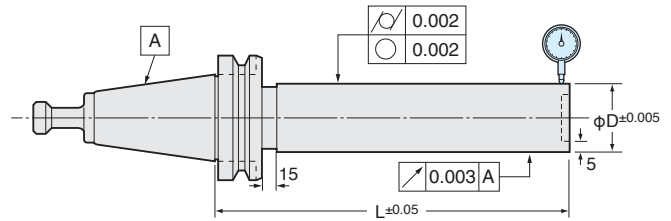
TEST BAR

NIKKEN

Indispensable for checking your machine spindle.
Sub-zero treatment keeps accuracy to prevent from the deformation.
Each test bar is provided in a safety wooden box.



TB



Exact size of ϕD and L are marked on each test bar.

TAPER	Code No.	ϕD	L	Weight (Kg)	Run-out at total length	Circularity, Cylindricity
No.15	BT15BR-TB15-110	15	110	0.25	Within 0.003mm	Within 0.002mm
No.30	BT30-TB40-150	40	150	1.7		
No.40	BT40-TB40-200	40	200	2.7		
No.50	BT50-TB50-300	50	300	7.7		

★The code No. for Test Bar without flange is **AST** instead of **BT**. e.g. Test Bar for #40=AST40-TB40-200
★It comes with Pull Stud, please specify Pull Stud Code No. Please refer P.319 for Pull Stud.
★The different dimension of ϕD and L are available. e.g. BT50-TB50-40
But, the accuracy standard will be different. Please contact us.

The inspection certificate traceable to the national standard is available with charge.

Tool Wagon

NIKKEN



TW

Photo shows wagon with **E236N**.
E236N must be used on.

TAPER	Code No.	Wagon Storage	With E236N
BT30	TW30	60piece	40piece
BT40	TW40	48piece	32piece
BT50	TW50	40piece	28piece
NC5-46, HSK40A	TW-NC5- 46	48piece	32piece
NC5-63, HSK63A	TW-NC5- 63	48piece	32piece
NC5-85	TW-NC5- 85	40piece	28piece
NC5-100, HSK100A	TW-NC5-100	40piece	28piece



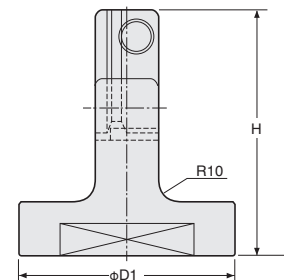
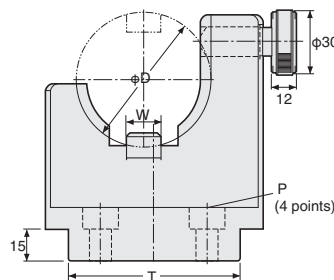
TAPER CLEANER

★For the Code No. of Taper Cleaner, please add
“-Taper No.” at the end of “NTP-CLE”.
e.g. NTP-CLE50

TOOL CLAMPER

NIKKEN

NCL



Code No.	ϕD	W	$\phi D1$	H	T	P	Pitch	Remark
NCL-BT30	46	15.9	102	110	80	$\phi 10.3$ (M10)	50 × 60	
-BT40	63	15.9	102	115	80		50 × 60	NC5- 63 can be used
-BT45	85	19.2	115	124	90		60 × 70	NC5- 85 can be used
-BT50	100	25.6	130	133	100		70 × 80	NC5-100 can be used
NCL-NC5-46	46	12	102	110	80		50 × 60	
-IT50	97.5	25.6	130	133	100		70 × 80	
-ICAT40	63.55	15.9	102	115	80		50 × 60	IT40, CAT40
-CAT50	98.45	25.6	130	133	100		70 × 80	

★Please refer P.168 for the TCL-GH Tool Clasper.