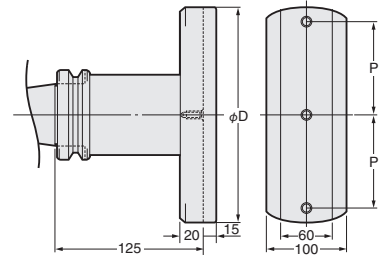
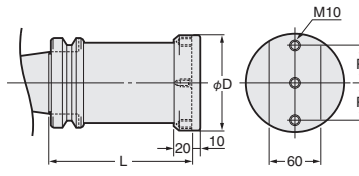


MODULAR TYPE ARBOR



BALANCE CUT RAK BORING ARBOR for LARGE DIA. <RAK Arbor>



RAK

Fig.1

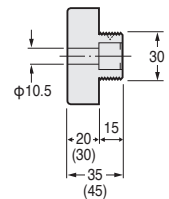
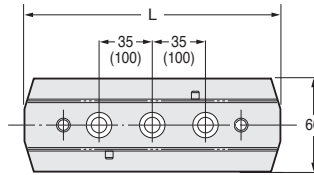
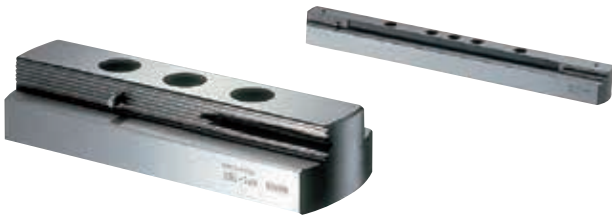
Fig.2

Code No.	Boring Range	L	D	P	Weight (kg)	Applicable RPC Plate	Hex. Socket bolt	Fig.
BT40-RAK-130A (IT40)	130~230	130	102	35	4.9	RPC-130, 180	M1035	1
BT50-RAK-110A (IT50)	130~330	110			7.2	RPC-130, 180, 230, 280		
(IT50)-RAK-160A		160			9.9			
-RAK-210A		210			12.6			
-RAK-260A		260			15.3			
-RAK-310A		310			18.0			
-RAK-360A		360			20.7			
-RAK-410A	410	23.4						
-RAK330-125*	330~580	125	240	100	12.0	RPC-330, 380, 430, 480, 530	M1045	2

★The location of the cutting edge is same as the drive key for standard. The different location is available, please specify θ . e.g. BT50-RAK-160A (90°)
 ★For centre through coolant type, please add "-C" at the end of Code No. e.g. BT50-RAK-160A-C 2 set of coolant nozzles are standard accessory.
 ★Code No of coolant nozzle is 9RAK-NZL-L59.
 ★IT40-RAK-130 is available. ★* : In case of IT50, IT50-RAK-330-135 is standard gauge length.



BALANCE CUT PLATE for LARGE DIA. <RPC Plate>



Dimensions in () are for RPC-330, 380, 430, 480 and 530.

Code No.	Boring Range	L	Weight (kg)	Code No.	Boring Range	L	Weight (kg)	Code No.	Boring Range	L	Weight (kg)
RPC-130	ϕ 130~180	118	1.4	RPC-330	ϕ 330~380	316	5.3	RPC-530	ϕ 530~580	516	8.7
-180	ϕ 180~230	166	2.0	-380	ϕ 380~430	366	6.1				
-230	ϕ 230~280	216	2.7	-430	ϕ 430~480	416	7.0				
-280	ϕ 280~330	266	3.3	-480	ϕ 480~530	466	7.9				

Accessories for Balance-Cut RAC

Steel, Stainless Steel and Cast Iron
RCC-130 (CN08)

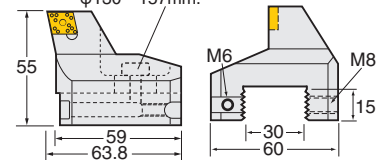
Heavy Duty Boring of Iron and Cast Iron
RCC-130E (CC12)

For aluminum
RCC-130A (AEG16)

For Through Hole and Multi Sheets
RCC-130K (SC12)



Cartridge Lock Bolt
Please remove the bolt when using RAC-130 type for ϕ 130~157mm.



Weight : 0.6kg

Accessories	Insert Tip	Clamp Bolt	Adjust Screw	Adjust Wrench	Wrench for Insert	Set Screw (M8)	Wrench for M815 Bolt	Hex Socket Bolt	Applicable RPC Plate
Code No.	*	CSM-70	M540	M3	20S	M815	M4	M625	RPC-130, 180, 230, 280, 330, 380, 430, 480, 530

★* : The insert tip is RCC-130: CN08 (P.80), RCC-130E: CC12 (P.78), RCC-130A: AEG16 (P.82), RCC-130K: SC12 (P.84) Please refer P.124 for cutting condition.
 ★There are two different types clamping system. One is eccentric system, the other is screw on system. Above parts are for screw on system.
 ★Code No. RCC-130 indicates a single cartridge. When ordering a pair cartridge, please appoint to us Code No. S.RCC-130.
 ★The Code No. of the cartridges for 2 stepped balance cut is S.RCC-130-(0.3)

ACCESSORIES for BALANCE-CUT BORING ARBOR for LARGE DIA.

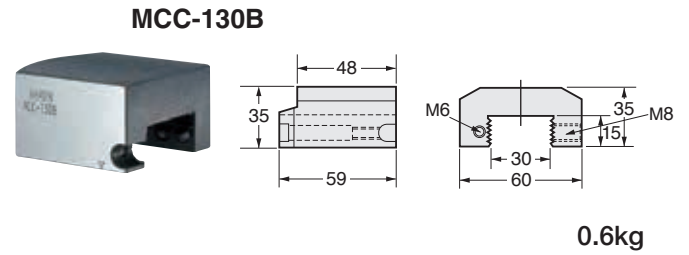
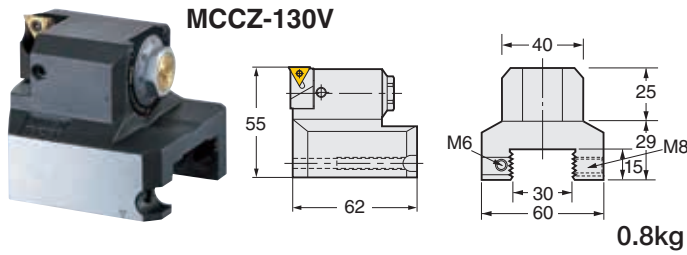


JAPAN PAT.

Accessories for Balance-Cut BAC-V

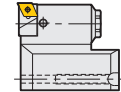
Balance-Cut BAC type cartridge for large dia.

BAC type Balancer for Balance-Cut large dia.



Accessories	ZMAC-V Unit	Insert Tip	Clamp Bolt	Wrench for Insert	Lock Screw	Adjust Screw	Set Screw (M8)	Wrench for M815 Belt	Adjust Wrench	Adjustment Handle	Applicable RPC Plate
Code No.	M5HZ-55V	6MP-C	M2577	T-8	M366	M540	M815	M4	M3	M5HZL	RPC-130,180,230,280,330,380,430,480,530

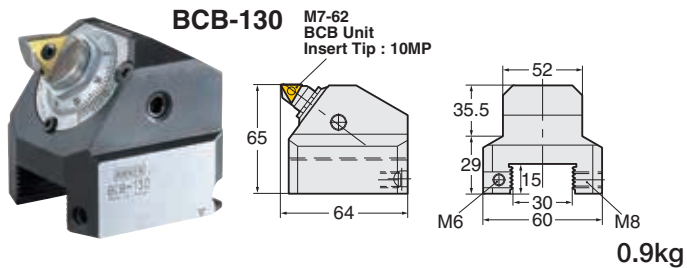
★Please refer P.88 for RPC Plate. ★Set Code No. is S.MCCZ-130V.
 ★M5HZ-55VR with CC06-C insert tip is available. Please specify code No. S.MCCZ-130VR.
 ★6MP-C insert tip is supplied as standard. P.127 Please refer P.125 for cutting condition.



Accessories for Balance-Cut BCB

Balance-Cut BCB type cartridge for large dia.

MAC type Balancer for Balance-Cut large dia.



Accessories	BCB Unit	Insert Tip	Clamp Bolt	Wrench for Insert	Lock Screw	Adjust Screw	Set Screw (M8)	Wrench for M815 Belt	Adjust Wrench	Adjustment Handle	Applicable RPC Plate
Code No.	M7-62	10MP-T	M67	20S	B357, B367	M540	M815	M4	M3	M397	RPC-130,180,230,280,330,380,430,480,530

★Please refer P.88 for RPC Plate. ★Set Code No. is S.BCB-130.
 ★10MP-T insert tip is supplied as standard. P.129 Please refer P.125 for cutting condition.

HSK MODULAR TYPE ARBOR



BALANCE CUT RAK BORING ARBOR for LARGE DIA. <RAK Arbor>



RAK

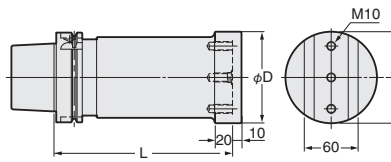


Fig.1

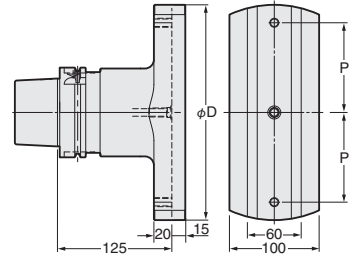


Fig.2

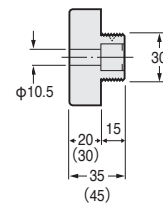
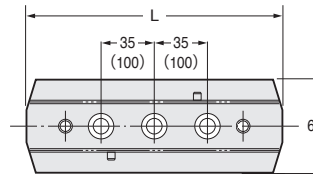
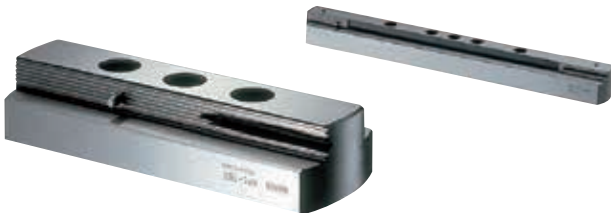
Code No.	Boring Range	L	D	P	Weight (Kg)	Applicable RPC Plate	Hex. Socket bolt	Fig.
HSK 63A-RAK-130A	130~230	130	102	35	4.3	RPC-130, 180	M1035	1
HSK100A-RAK-110A	130~330	110			6.7	RPC-130, 180, 230, 280		
-RAK-160A		160			9.2			
-RAK-210A		210			11.9			
-RAK-260A		260			14.6			
-RAK-310A		310			17.3			
-RAK-360A		360			20.0			
-RAK-410A	410	22.7						
-RAK330-125	330~580	125	240	100	11.3	RPC-330, 380, 430, 480, 530	M1045	2

★The location of the cutting edge is same as the drive key for standard. The different location is available, please specify θ . e.g. HSK100A-RAK-160A(90°)

★For centre through coolant type, please add "C" at the end of Code No. e.g. HSK100A-RAK-160A-C 2 set of coolant nozzles are standard accessory.



BALANCE CUT PLATE for LARGE DIA. <RPC Plate>



Dimensions in () are for RPC-330, 380, 430, 480 and 530.

Code No.	Boring Range	L	Weight(Kg)	Code No.	Boring Range	L	Weight(Kg)	Code No.	Boring Range	L	Weight(Kg)
RPC-130	130~180	118	1.4	RPC-330	330~380	316	5.3	RPC-530	530~580	516	8.7
-180	180~230	166	2.0	-380	380~430	366	6.1				
-230	230~280	216	2.7	-430	430~480	416	7.0				
-280	280~330	266	3.3	-480	480~530	466	7.9				

Accessories for Balance-Cut RAC

Steel, Stainless Steel and Cast Iron
RCC-130 (CN08)

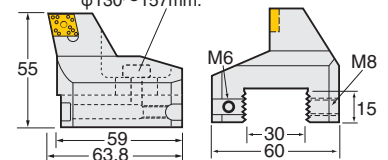
Heavy Duty Boring of Iron and Cast Iron
RCC-130E (CC12)

For aluminum
RCC-130A (AEG16)

For Through Hole and Multi Sheets
RCC-130K (SC12)



Cartridge Lock Bolt
Please remove the bolt when using RAC-130 type for $\phi 130 \sim 157$ mm.



Weight : 0.6Kg

Accessories	Insert Tip	Clamp Bolt	Adjust Screw	Adjust Wrench	Wrench for Insert	Set Screw (M8)	Wrench for M815 Bolt	Hex Socket Bolt	Applicable RPC Plate
Code No.	*	CSM-70	M540	M3	20S	M815	M4	M625	RPC-130, 180, 230, 280, 330, 380, 430, 480, 530

★*: The insert tip is RCC-130:CN08 (P.282), RCC-130E:CC12 (P.280), RCC-130A:AEG16 (P.284), RCC-130K:SC12 (P.286) Please refer P.124 for cutting condition.

★There are two different types clamping system. One is eccentric system, the other is screw on system. Above parts are for screw on system.

★Code No. RCC-130 indicates a single cartridge. When ordering a pair cartridge, please appoint to us Code No. S.RCC-130.

★The Code No. of the cartridges for 2 stepped balance cut is SRCC-130(0.3)