

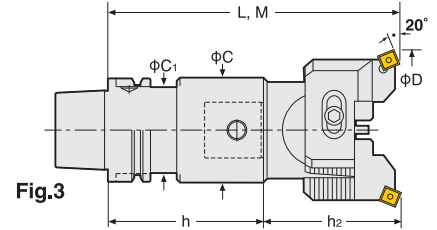
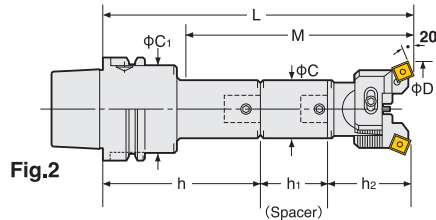
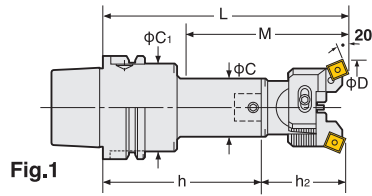
# HSK BALANCE-CUT BORING ARBOR (RAC-K)

**NIKKEN**

Rough Boring—For Through Hole and Multi Sheets

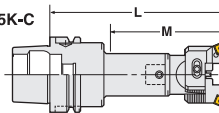


RAC-K



TAPER	Code No.	Boring Range D	Boring Depth M	C	C <sub>1</sub>	Shank Code No.	Spacer Code No.	P.234		Weight (kg)	Fig	
								Head Code No.	Tip No.			
HSK63A	HSK 63A-RAC25-135K	25~32	67	15	24	HSK 63A-Q12- 80	—	12-RAC 25- 55K	SC09	1.7	1	
	-165K		105			-Q12-110						1.8
	-180K		112			-Q12- 80						SP12-12-45
	-RAC32-150K	32~45	77	19	30	-Q16- 95	—	16-RAC 32- 55K	SC09	2.1	1	
	-180K		110			-Q16-125						2.3
	-195K		122			-Q16- 95						SP16-16-45
	-RAC43-150K	43~55	97	40	50	-Q20- 80	—	20-RAC 43- 70K	SC12	2.4	1	
	-180K		130			-Q20-110						2.6
	-210K		157			-Q20- 80						SP20-20-60
	-RAC53-165K	53~70	135	53	50	-Q26- 95	—	26-RAC 53- 70K	SC12	2.2	1	
	-210K		180			-Q26-140						3.0
	-225K		195			-Q26- 95						SP26-26-60
	-RAC70-180K	70~100	180	64	52.4	-Q34- 95	—	34-RAC 70- 85K	SC12	4.5	3	
	-195K		195			-Q34-110						4.9
	-240K		240			-Q34- 95						SP34-34-60
-RAC100-195K	100~130	195	83	—	-Q42- 95	—	42-RAC100-100K	—	6.5	—		

- ★“C” grade (Coated) inserts are supplied as standard with the head. P.236 Please refer P.95 for cutting condition.
- ★Please refer P.245 for base holder, P.86 for spacer and P.69 for head.
- ★For centre through tool coolant type, please add “-C” at the end of Code No. e.g. HSK63A-RAC53-165K-C
- ★For HSK40A or 50A, modular connection system is applied. Please refer P.245 for Base Holder.
- ★When L length is required longer than standard, please specify the boring depth M.



High Pressure Coolant Through Tool