

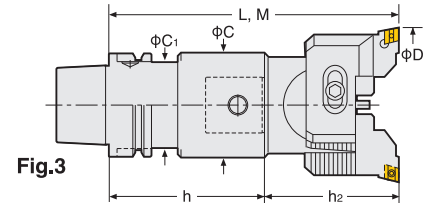
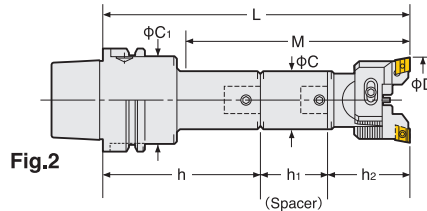
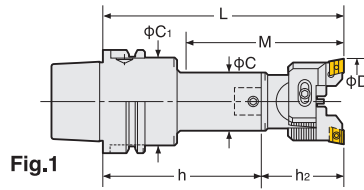
# HSK BALANCE-CUT BORING ARBOR (RAC-A)

**NIKKEN**

Rough Boring—For Aluminium

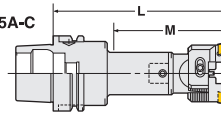


RAC-A



TAPER	Code No.	Boring Range D	Boring Depth M	C	C <sub>1</sub>	Shank Code No.	Spacer Code No.	P.232		Weight (kg)	Fig
								Head Code No.	Tip No.		
HSK63A	HSK 63A-RAC25-135A	25~32	67	15	24	HSK 63A-Q12- 80	—	12-RAC 25- 55A	AEG12	1.7	1
	-165A		105			-Q12-110	—			1.8	
	-180A		112			-Q12- 80	SP12-12-45			1.8	
	-RAC32-150A	32~45	77	19	30	-Q16- 95	—	16-RAC 32- 55A	AEG16	2.1	1
	-180A		110			-Q16-125	—			2.3	
	-195A		122			-Q16- 95	SP16-16-45			2.3	
	-RAC43-150A	43~55	97	40	50	-Q20- 80	—	20-RAC 43- 70A	AEG16	2.4	1
	-180A		130			-Q20-110	—			2.6	
	-210A		157			-Q20- 80	SP20-20-60			2.9	
	-RAC53-165A	53~70	135	53	50	-Q26- 95	—	26-RAC 53- 70A	AEG16	2.2	1
	-210A		180			-Q26-140	—			3.0	
	-225A		195			-Q26- 95	SP26-26-60			2.9	
	-RAC70-180A	70~100	180	64	52.4	-Q34- 95	—	34-RAC 70- 85A	AEG16	4.5	3
	-195A		195			-Q34-110	—			4.9	
	-240A		240			-Q34- 95	SP34-34-60			5.9	
-RAC100-195A	100~130	195	83	—	-Q42- 95	—	42-RAC100-100A	—	6.5	—	

- ★"F" grade inserts are supplied as standard with the head. P.234 Please refer P.95 for cutting condition.
- ★Please refer P.245 for base holder, P.86 for spacer and P.69 for head.
- ★For centre through tool coolant type, please add "-C" at the end of Code No. e.g. HSK63A-RAC53-165A-C
- ★For HSK40A or 50A, modular connection system is applied. Please refer P.245 for Base Holder.
- ★When L length is required longer than standard, please specify the boring depth M.



High Pressure Coolant Through Tool