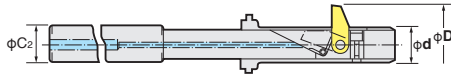
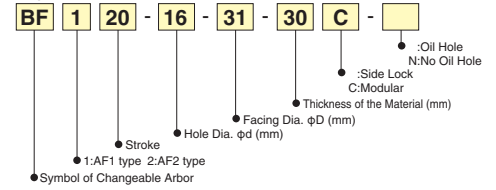


CHANGEABLE ARBOR for Automatic Back Spot Facing Arbor



Explanation of the Code No.



BF

★ The following list shows the concepts for the changeable arbor. Please order your own arbor to suit your application.

Changeable Arbor Code No.	Facing Dia. D	Facing Depth d	Thick T	h_1	h_2	C_2	Bit $W_1 \times W_2$	Main Body Code No.			
BF120-d-D-TC	18~ 32	14.0~17.7	30	32	63	32	8x 4	BT40,50-AF1-20-OH			
BF120-d-D-TC	20~ 36	17.8~19.9		30	65		10x 6				
BF120-d-D-TC	23~ 40	20.0~22.4		35	68		10x 8				
BF120-d-D-TC	26~ 45	22.5~25.9		32	73		12x 8				
BF120-d-D-TC	29~ 50	26.0~28.9		36	73		15x10		15x10	BT40,50-AF1-30-OH	
BF120-d-D-TC	32~ 50	29.0~31.9		36	83						-AF1-20-OH
BF130-d-D-TC	51~ 58	32.0~35.9		36	83						
BF120-d-D-TC	36~ 55	36.0~39.9		39	73						15x12
BF130-d-D-TC	56~ 63	40.0~44.9		39	83	-AF1-30-OH					
BF120-d-D-TC	40~ 55	45.0~49.9		39	79			18x15			-AF1-20-OH
BF130-d-D-TC	56~ 73	45.0~49.9		39	89	-AF1-30-OH					
BF120-d-D-TC	45~ 60	50.0~54.9		39	99		18x15		-AF1-40-OH		
BF130-d-D-TC	61~ 75	50.0~54.9		39	79	-AF1-20-OH					
BF140-d-D-TC	76~ 80	55.0~61.9		65	109		40	20x15	-AF2-50-OH		
BF250-d-D-TC	65~ 75	55.0~61.9		70	119	20x15				-AF2-60-OH	
BF260-d-D-TC	75~ 85	62.0~69.9		75	129		20x15	-AF2-70-OH			
BF270-d-D-TC	80~ 90	62.0~69.9		65	111	22x18			-AF2-50-OH		
BF250-d-D-TC	75~ 85	70.0~74.9		70	121		22x18	-AF2-60-OH			
BF260-d-D-TC	85~ 95	70.0~74.9		75	131	22x18			-AF2-70-OH		
BF270-d-D-TC	90~100	70.0~74.9		65	111		22x18	-AF2-50-OH			
BF250-d-D-TC	85~ 95	77.0~84.9		70	121	22x18			-AF2-60-OH		
BF260-d-D-TC	95~105	77.0~84.9		75	131		22x18	-AF2-70-OH			
BF270-d-D-TC	100~110	77.0~84.9		65	118	22x18			-AF2-50-OH		
BF250-d-D-TC	95~105	84.0~91.9		70	121		22x18	-AF2-60-OH			
BF260-d-D-TC	105~115	84.0~91.9		75	138	22x18			-AF2-70-OH		
BF270-d-D-TC	110~120	84.0~91.9		65	118		22x18	-AF2-50-OH			
BF250-d-D-TC	105~115	91.0~98.9		70	121	22x18			-AF2-60-OH		
BF260-d-D-TC	115~125	91.0~98.9		75	138		22x18	-AF2-70-OH			
BF270-d-D-TC	120~130	91.0~98.9	75	138	22x18	-AF2-70-OH					

MANUAL BACK SPOT FACING ARBOR

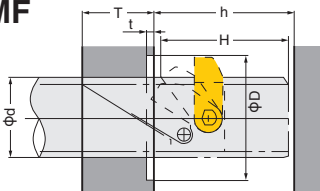
JAPAN, CHINA PAT.



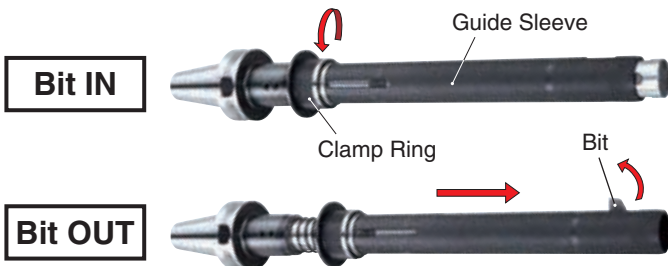
e.g. ST32-MF53-84-300

Arbor shank is straight shank. Please use side lock holder (BT50-SL32C-105 P.59).

MF

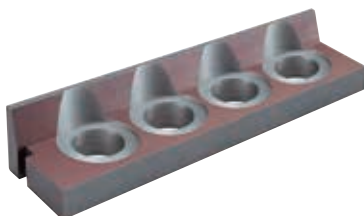


★ Please specify ϕd , ϕD , t , T , h and material, when ordering. H (Dimension for bit in/out) is depended on ϕd and ϕD .



Operation

1. X, Y Positioning
2. Z down (Insert the arbor into the hole.)
3. Rotate clamp ring causes guide sleeve forward to push the bit out.
4. Z up (Back spot facing)
5. Z Down
6. Rotate clamping in reverse direction causes guide sleeve backward to store the bit in.
7. X, Y Moving



Sample

Material : FCD200 V=30m/min.
 Hole : $\phi 53$ f=0.1mm/rev.
 Facing Dia. : $\phi 84$