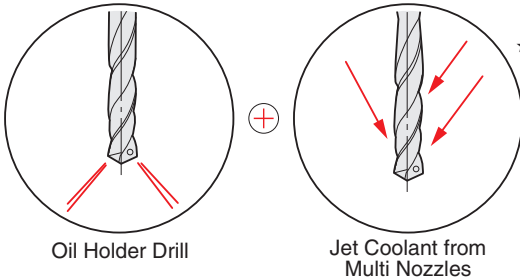


MULTI OIL HOLE HOLDER (1)



Internal and External Coolant Feeding Switchable

Internal Coolant Feeding is done with Oil Holder Drill and External Coolant Feeding from Multi Nozzles exactly hit the cutting point in jet streams, when drill, end mill, tap, and reamer without oil hole are used switching of Internal and External Feeding can be done in one touch.



Oil Holder Drill

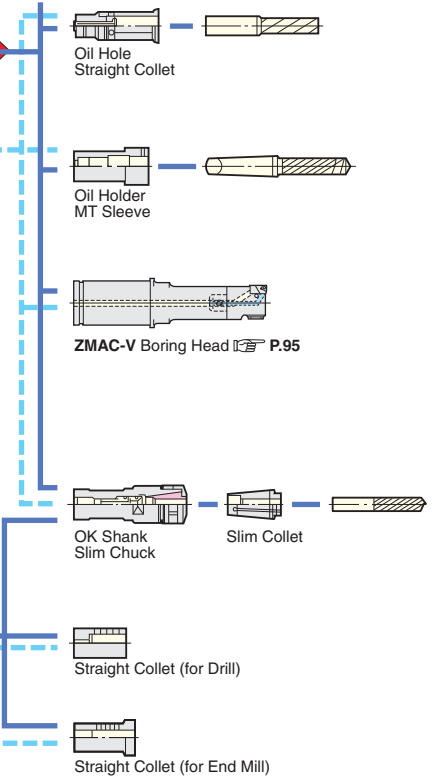
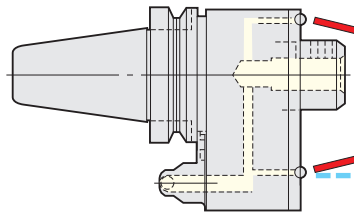
Jet Coolant from Multi Nozzles

Varieties of Attachment P.139



★For High Precision Machining, MOC or MOK is recommended.

JET Coolant direction adjustable

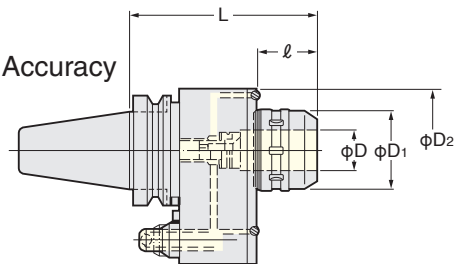
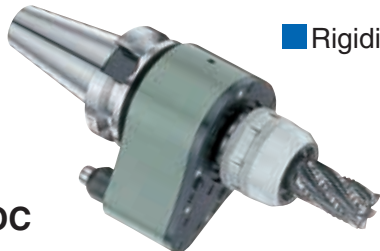


■ Conventional Oil Hole Holder (Internal Coolant Feeding) SLO, SKO are also available. P.139

Milling Chuck type Multi Oil Hole Holder

■ Rigidity · Gripping Power · Accuracy

MOC



D₂ :
BT40 : 85
BT50 : 110

MAX. Coolant Pressure: 2.5MPa

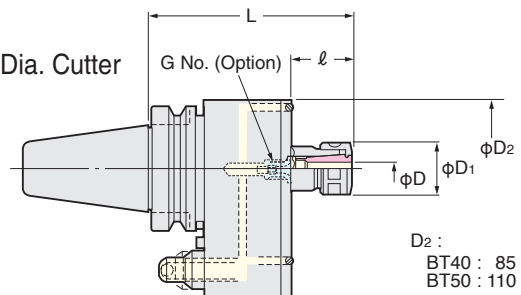
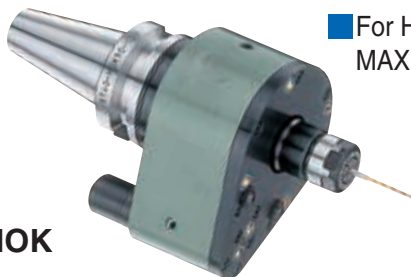
TAPER	Code No. -L	D	ℓ	D ₁	MAX.r/min	Weight (kg)	Applicable Collet
No.40	BT40-MOC20-145	20	49	52	4,000	3.6	CCK20 CCNK20
	(IT40)-MOC32-160	32	69	69	3,500	4.4	CCK32 CCNK32 OK32-MT K32-Q
No.50	BT50-MOC20-160	20	44	52	4,000	7.0	CCK20 CCNK20
	(IT50)-MOC32-170	32	54	69	3,500	7.1	CCK32 CCNK32 OK32-MT K32-Q

★For Collet and Adapter, please refer P.139. ★K32-Q : Straight Shank for Modular type. P.109 ★IT40-MOC20-155 and IT40-MOC32-170 are also available.
★Stopper block is available as an option. When ordering, please inform your M/C maker and Model as well as your M/C spindle flange dimension. P.324

Slim Chuck type Multi Oil Hole Holder

■ For High Speed Rotation of Small Dia. Cutter
MAX.6,000r/min

MOK



D₂ :
BT40 : 85
BT50 : 110

MAX. Coolant Pressure: 2.5MPa

TAPER	Code No. -L	D	ℓ	D ₁	MAX.r/min	Weight (kg)	Collet	G No. (Option)
No.40	BT40-MOK10-135	5~10	39	27.5	6,000	3.2	SK10	SKG10-10HGF
	(IT40)-MOK16-150	10~16	54	40	5,500	3.5	SK16	SKG16-12HGF
No.50	BT50-MOK10-150	5~10	34	27.5	6,000	6.8	SK10	SKG10-10HGF
	(IT50)-MOK16-165	10~16	49	40	5,500	7.1	SK16	SKG16-12HGF

★Nut is supplied as standard. ★Adjust Screw (G No.) P.56 and spanner are available as an option. MOK10: SKL-10, MOK16: 9HC16 P.324
★For Slim Chuck Collet, please refer P.47. ★Stopper block is available as an option. When ordering, please inform your M/C maker and Model as well as your M/C spindle flange dimension.