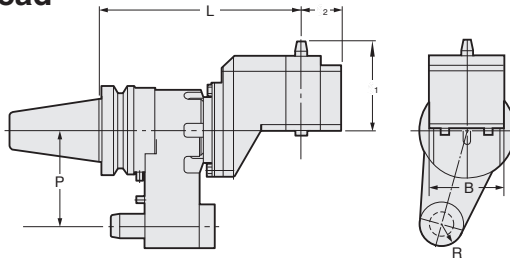


2LOCK QUICK TYPE ANGULAR HEAD (Free Positioning in 360°)



Quick type Off-Set Angular Head



Explanation of the Code No.

NBT40 - AF T 30 - 200

- Length from Gauge Line
- Taper No. of Adapter
- Quick type
- Off-Set type Angular Head
- Shank

MAX2,000r/min

AFT

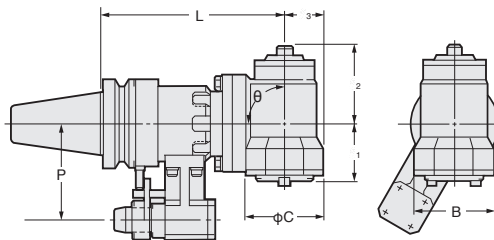
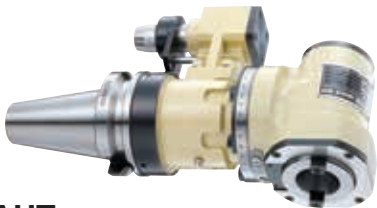
TAPER	Code No.	Shank	L	P	l ₁	l ₂	B	R	Adapter	Weight(kg)
No.40	NBT40 (NIT40)-AFT30-200	NBT40	200	65	85	35	70	17.5	AHK30	7.5
No.50	NBT50 (NIT50)-AFT35-230	NBT50	230	110	85	45	84	25	AHK35	16.0

- ★Taper Connection System is applied to Stopper Block. (Different from the another FA Tooling)
- ★All types are available with Oil Hole System. ★Stopper block is available as an option. When ordering, please inform your M/C maker and Model as well as your M/C spindle flange dimension.
- ★NIT40-AFT30-200 and NIT50-AFT35-230 are also available. ★When M/C spindle rotates CW, the cutter rotates CW.

- ★For adapter, please refer P.146.
- ★Test bar is attached as standard.



Quick type 90° Angular Head



Explanation of the Code No.

NBT40 - AH T 30 - 160 - 90

- Angle
- Length from Gauge Line
- Taper No. of Adapter
- Quick type
- Symbol of Angular Head
- Shank

MAX2,000r/min

AHT

TAPER	Code No. L -θ	Shank	L	P	l ₁	l ₂	l ₃	C	B	θ	Adapter	Weight(kg)
No.40	NBT40-AHT30-160 - 90	NBT40	160	65	58	61	37	86	80	90	AHK30	6.5
	(NIT40) -250* -90	NBT40	250									10.5
No.50	NBT50-AHT35-210 - 90	NBT50	210	110	65	88	45	100	90	90	AHK35	17.0
	(NIT50) -300* -90	NBT50	300									22.0

- ★Taper Connection System is applied to Stopper Block. (Different from the another FA tooling)
- ★All types are available with Oil Hole System.
- ★Stopper block is available as an option. When ordering, please inform your M/C maker and Model as well as your M/C spindle flange dimension.
- ★Models with * mark : Detailed discussion is needed. ★When M/C spindle rotates CCW, the cutter rotates CW.

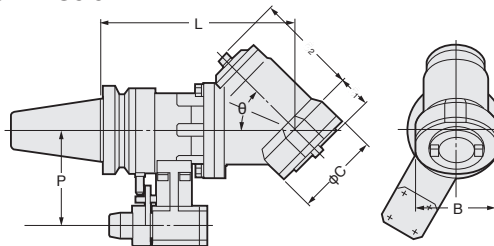
- ★For adapter, please refer P.146.
- ★Test bar is attached as standard.



Quick type 30°, 45°, 60° Angular Head



Photo shows 30° type.



Explanation of the Code No.

NBT40 - AH T 30 - 170 - 45

- Angle
- Length from Gauge Line
- Taper No. of Adapter
- Quick type
- Symbol of Angular Head
- Shank

MAX2,000r/min

AHT

TAPER	Code No. L -θ	Shank	L	P	l ₁	l ₂	C	B	θ	Adapter	Weight(kg)
No.40	NBT40-AHT30-205 - 30	NBT40	205	65	35	88	86	80	30	AHK30	6.5
	(NIT40) -170 -45		170						45		6.5
	-160 -60		160						60		6.5
	-250* -30	NBT40	250	65	35	88	86	80	30	AHK30	10.5
	-45								45		10.5
	-60								60		10.5
No.50	NBT50-AHT35-258 - 30	NBT50	258	110	26	110	100	90	30	AHK35	17.0
	(NIT50) -225 -45		225						45		17.0
	-210 -60		210						60		17.0
	-300* -30	NBT50	300	110	26	110	100	90	30	AHK35	22.0
	-45								45		22.0
	-60								60		22.0

- ★Taper Connection System is applied to Stopper Block. (Different from the another FA tooling)
- ★All types are available with Oil Hole System.
- ★Stopper block is available as an option. When ordering, please inform your M/C maker and Model as well as your M/C spindle flange dimension.
- ★Models with * mark : Detailed discussion is needed. ★When M/C spindle rotates CCW, the cutter rotates CW.

- ★For adapter, please refer P.146.
- ★Test bar is attached as standard.

