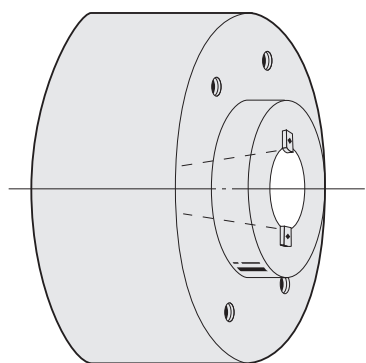


# DIRECT MOUNT FLANGE TYPE ANGULAR HEAD

**NIKKEN**



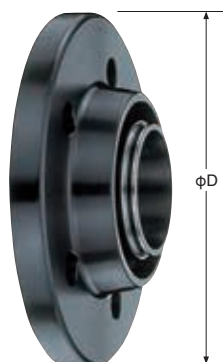
Spindle



Direct Mount  
Flange type Shank

Code. No.  
**NT 50 - F 235 - 14**

Shank No.      φD      L



Flange

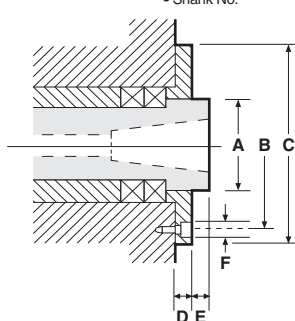
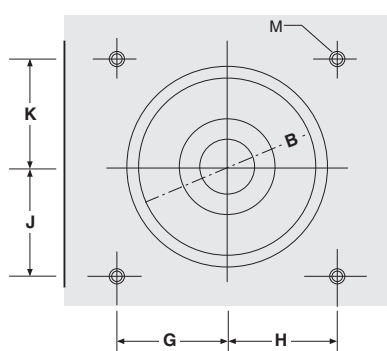
Code. No.  
**F 235 - AHM**

φD      Symbol of Modular type Angular Head  
Symbol of Flange type



Modular Head

**P.147**



We have a lot of experience of  
Special Angular Heads such as  
Flange Mount type, Both Sides  
Spindles type Heads and Angular  
Head for High Speed Rotation.  
Please contact with us.

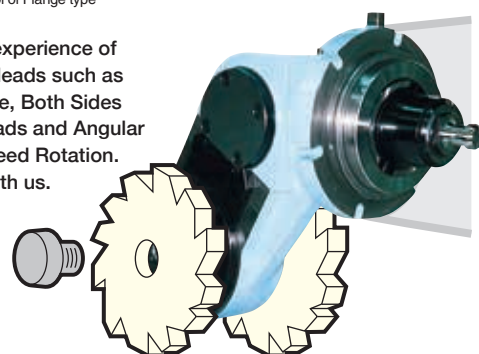
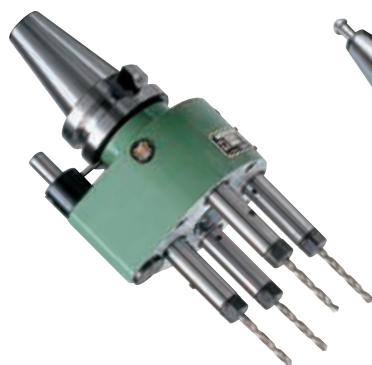


Photo shows NC5 Shank.

★When ordering, please let us know above A, B, C, D, E, F, G, H, J, K, M and Work Drawing.

# MULTI SPINDLE HEAD SERIES

**NIKKEN**



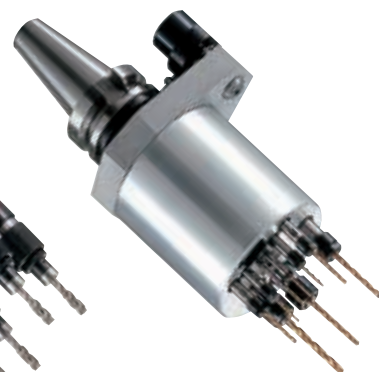
**MHS ①** Multi Drill Head  
(for Straight Shank Drill)



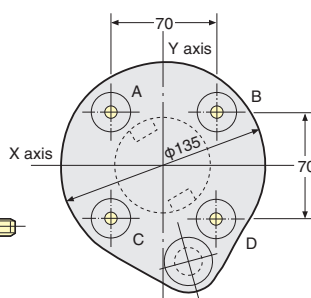
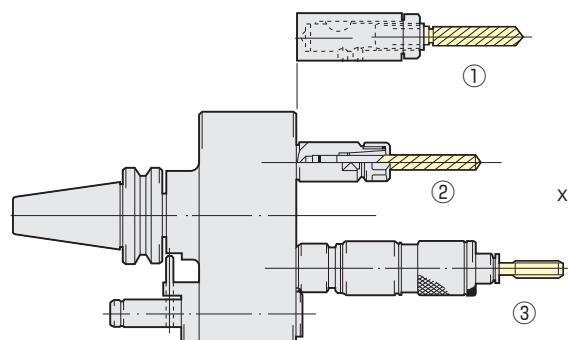
**MHD ②** Multi Drill Head  
(for MT Shank Drill)



**MHT ③** Multi Drill Head  
(for Tapper Chuck)



**MHV** High Speed Multi Drill Head  
MAX.8,000r/min



Please specify the below when ordering.

■ M/C Maker, Model No. Drawing of Spindle  
Flange. Stopper Block is provided or not.

■ Coordinates of each hole A(X= -35, Y= 35)  
B(X= 35, Y= 35)  
C(X= -35, Y=-35)  
D(X= 35, Y=-35)

or pitch and number of holes.

■ A diameter of drill or tap

■ Material