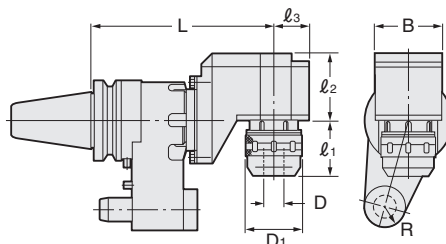
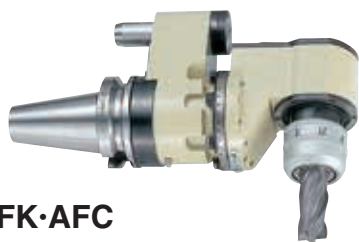


SOLID TYPE ANGULAR HEAD (Free Positioning in 360°)

NIKKEN

Solid OFF SET type Angular head

AFK·AFC



Explanation of the Code No.

BT40 - **AF** **K** **16** - **200**

- Length from Gauge Line
- MAX. Chucking Dia.
- Kind of chuck
K : Slim Chuck
C : Milling Chuck
- OFF SET type
Symbol of Angular Head
- Shank

TAPER	Code No. -L	D	D ₁	l ₁	l ₂	l ₃	B	R	r/min	Weight (kg)	Collet
No.40	BT40-AFK16-200	2.75~16	40	50	85	35	70	17.5	2,000	8.5	SK 16
	(IT40)-AFC20-200	2~20	52	56						8.7	KM 20
No.50	BT50-AFC20-230	2~20	52	58	85	45	84	25	2,000	17.0	KM 20
	(IT50)-AFC32-230	3~32	69	65						17.2	KM 32

★Taper Connection System is applied to Stopper Block. (Different from the another FA Tooling) ★Test bar is attached as standard.

★All types are available with Oil Hole System.

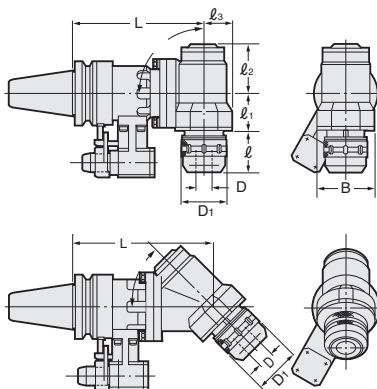
★Stopper block is available as an option. When ordering, please inform your M/C maker and Model as well as your M/C spindle flange dimension.

★For **(SK16)**, please refer **P.47**. For **(KM20)** and **(KM32)**, please refer **P.35**.

★Please advise name of M/C builder and model No. etc. ★When M/C spindle rotates CW, the cutter rotates CW.

Solid - 90°, 45° type Angular head

AHK·AHC



Explanation of the Code No.

BT40 - **AH** **K** **10** - **195** - **90**

- angle 30°, 45°, 60°, 90°
- Length from Gauge Line
- MAX chucking Dia
- Kind of chuck
K : Slim Chuck
C : Milling Chuck
- Symbol of Angular Head
- Shank

TAPER	Code No. -L -θ	D	D ₁	ℓ	ℓ ₁	ℓ ₂	ℓ ₃	B	r/min	Weight (kg)	Collet
No.30	BT30-AHK10-120 -90	1.75～10	27.5	20	49	50	27.5	55	2,000	3.0	SK 10
No.40	BT40-AHK10-180 -90	1.75～10	27.5	18	45	57	32	60	4,000	8.0	SK 10
	-220° -90									9.0	
	(IT40)-AHK16-180 -90	2.75～16	40	25	41	58	35	70		8.7	SK 16
	-220° -90									9.7	
	-AHC20-160 -90	2～20	52	57	58	61	37	80	7.1	KM20	
	-250° -90								11.1		
No.50	BT50-AHK10-200 -90	1.75～10	27.5	18	45	57	32	60	4,000	15.0	SK 10
	-240° -90									16.0	
	(IT50)-AHK16-200 -90	2.75～16	40	25	41	58	35	70		15.7	SK 16
	-240° -90									16.7	
	-AHK25-210 -90	7.5～25.4	55	57	60	82	45	90	2,000	17.2	SK 25
	-300° -90									22.2	
	-AHC32-210 -90	3～32	69							17.5	KM32
	-300° -90									22.5	

★Taper Connection System is applied to Stopper Block. (Different from the another FA Tooling) ★Test bar is attached as standard.

★All types are available with Oil Hole System.

★Stopper block is available as an option. When ordering, please inform your M/C maker and Model as well as your M/C spindle flange dimension.

★For **(SK10)** **(SK16)** **(SK25)**, please refer **P.47**. For **(KM20)** **(KM25)** and **(KM32)**, please refer **P.35**.

★Angle 30°, 45°, 60° are also available as an option. ★* Mark is for light cutting.

★When M/C spindle rotates CCW, the cutter rotates CW.

★Please contact with us for the dimension of 30°, 45°, 60° type.