

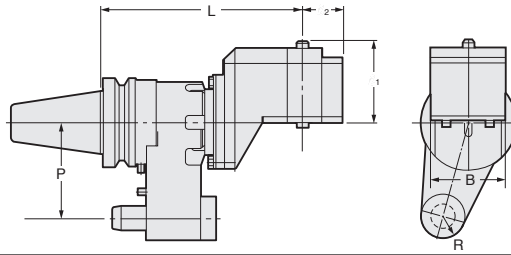
# QUICK TYPE ANGULAR HEAD (Free Positioning in 360°)



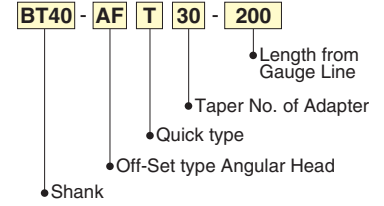
## Quick type Off-Set Angular Head



AFT



Explanation of the Code No.



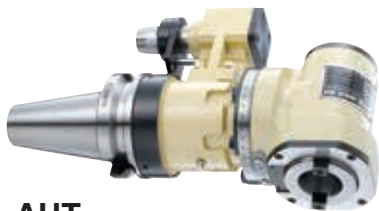
MAX2,000r/min

TAPER	Code No.	Shank	L	P	$l_1$	$l_2$	B	R	Adapter	Weight (kg)
No.40	BT40 (IT40)-AFT30-200	BT40	200	65	85	35	70	17.5	AHK30	7.5
No.50	BT50 (IT50)-AFT35-230	BT50	230	110	85	45	84	25	AHK35	16.0

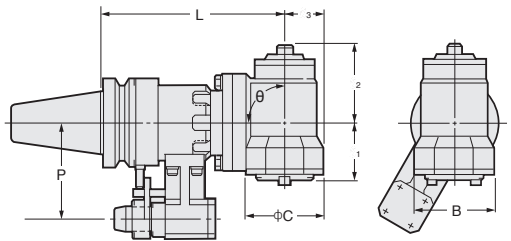
★Taper Connection System is applied to Stopper Block. (Different from the another FA Tooling) ★All types are available with Oil Hole System. ★Test bar is attached as standard.  
 ★Stopper block is available as an option. When ordering, please inform your M/C maker and Model as well as your M/C spindle flange dimension.  
 ★IT40-AFT30-200 and IT50-AFT35-230 are also available. ★When M/C spindle rotates CW, the cutter rotates CW.



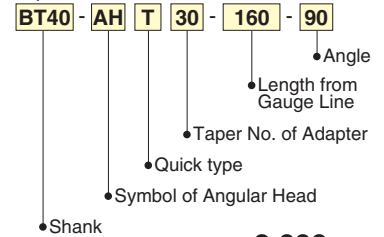
## Quick type 90° Angular Head



AHT



Explanation of the Code No.



MAX2,000r/min

TAPER	Code No. L -θ	Shank	L	P	$l_1$	$l_2$	$l_3$	C	B	θ	Adapter	Weight (kg)
No.40	BT40-AHT30-160 -90	BT40	160	65	58	61	37	86	80	90	AHK30	6.5
	(IT40) -250* -90	BT40	250									10.5
No.50	BT50-AHT35-210 -90	BT50	210	110	65	88	45	100	90	90	AHK35	17.0
	(IT50) -300* -90	BT50	300									22.0

★Taper Connection System is applied to Stopper Block. (Different from the another FA tooling) ★All types are available with Oil Hole System. ★Test bar is attached as standard.  
 ★Stopper block is available as an option. When ordering, please inform your M/C maker and Model as well as your M/C spindle flange dimension.  
 ★Models with \* mark : Detailed discussion is needed. ★When M/C spindle rotates CCW, the cutter rotates CW.

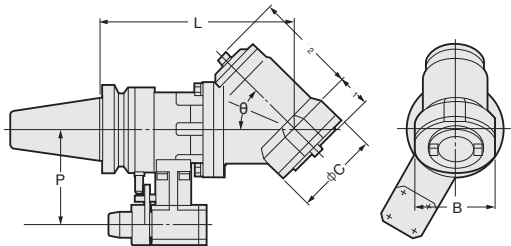


## Quick type 30°, 45°, 60° Angular Head

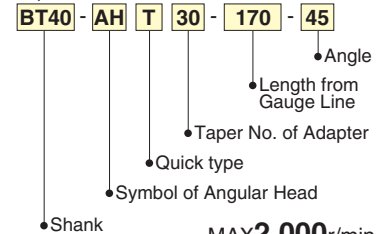


AHT

Photo shows 30° type.



Explanation of the Code No.



MAX2,000r/min

TAPER	Code No. L -θ	Shank	L	P	$l_1$	$l_2$	C	B	θ	Adapter	Weight (kg)
No.40	BT40-AHT30-205 -30	BT40	205	65	1.5	122	86	80	30	AHK30	6.5
	(IT40) -170 -45		170		35	88			45		6.5
	-160 -60		160		35	88			60		6.5
	-250* -30	BT40	250	1.5	122	86	80	30	AHK30	10.5	
	-45		250	35	88			45		10.5	
	-60		250	35	88			60		10.5	
No.50	BT50-AHT35-258 -30	BT50	258	110	0	140	100	90	30	AHK35	17.0
	(IT50) -225 -45		225		26	110			45		17.0
	-210 -60		210		40	105			60		17.0
	-300* -30	BT50	300	0	140	100	90	30	AHK35	22.0	
	-45		300	26	110			45		22.0	
	-60		300	40	105			60		22.0	

★Taper Connection System is applied to Stopper Block. (Different from the another FA tooling) ★All types are available with Oil Hole System. ★Test bar is attached as standard.  
 ★Stopper block is available as an option. When ordering, please inform your M/C maker and Model as well as your M/C spindle flange dimension.  
 ★Models with \* mark : Detailed discussion is needed. ★When M/C spindle rotates CCW, the cutter rotates CW.

