

# SMART TOOL ID SYSTEM

## REALIZING SMART FACTORIES WITH SMART TOOLS

The NIKKEN's new, smart HSK tooling system allows you to digitize tools for identification whether by ID chip or QR code. Rest assured that when you implement the tool management system, you can purchase it, as it supports the ID system of your choice.

Applicable Products

**HSK100A**  
**HSK63A**



**FRONT VIEW**



**ID CHIP COMPATIBLE**

It can be shipped with the highly versatile ID chip from Balluff in the ISO-standardized installing position. (The chips can be supplied either by NIKKEN or by customer)



**QR CODE COMPATIBLE**

By making it possible to deliver QR chips with a QR code engraved on a cylindrical chip, the installing position of the tool ID can be used for the QR code as it is.

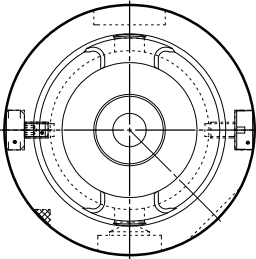


**NIKKEN KOSAKUSHO WORKS, LTD.**  
5-1, 1-chome, Minamishinden, Daito-shi, Osaka-fu, Japan

Web: [www.nikken-kosakusho.co.jp/en](http://www.nikken-kosakusho.co.jp/en)  
Tel: +81-(0)72-869-5810 Fax: +81-(0)72-869-6210  
e-mail: [export@nikken-kosakusho.co.jp](mailto:export@nikken-kosakusho.co.jp)

# 1 HSK STANDARD SPECIFICATIONS

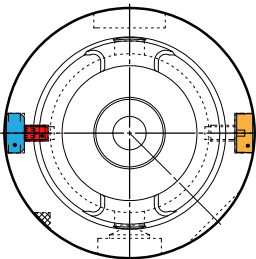
Standardized installing holes for ID chip or QR chip. It is also easy to handle when implement a tool management system after purchase.

Suffix Model	none			
Assembling Position				
Assembly	ID chip	QR chip	PB chip	PB screw
	-	-	-	-

Example) HSK63A-C20-110

# 2 ID CHIP-TYPE

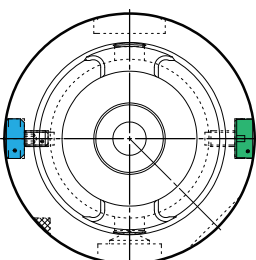
Whether the ID chip is supplied by you or arranged by us, the PB chip and PB screw are assembled and shipped together in either case.

Suffix Model	-D			
Assembling Position				
Assembly	ID chip	QR chip	PB screw	PB chip
	●	-	●	●

Example) HSK63A-C20-110-D

# 3 QR CHIP-TYPE

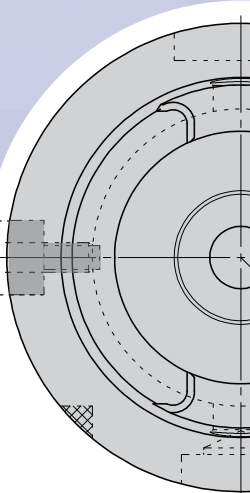
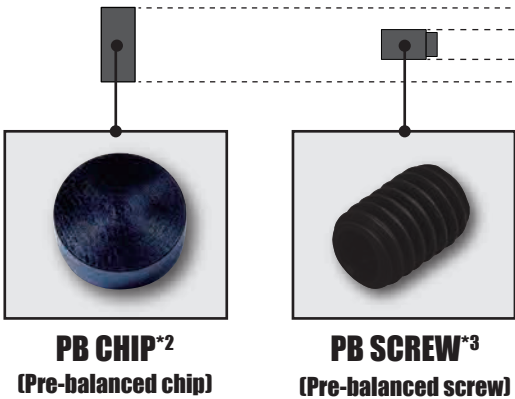
We install the QR chips and PB screws and ship them to you. At the customer's request, we can also deliver QR code marking.

Suffix Model	-Q			
Assembling Position				
Assembly	ID chip	QR chip	PB screw	PB chip
	-	●	-	●

Example) HSK63A-C20-110-Q



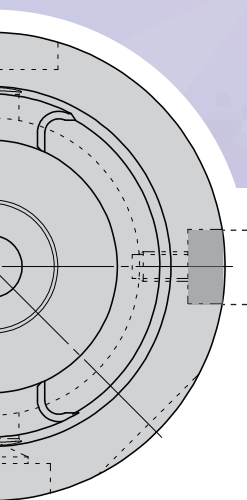
SIDE V



[HSK63A drawing: vie



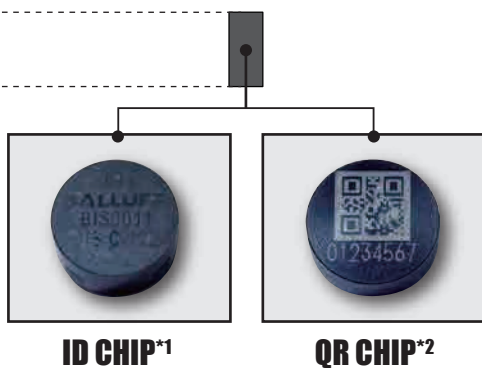
VIEW



View from spindle side]

**NIKKEN**

Smart Tool ID System



\*1: ID chip is from Balluff when arranged by NIKKEN.

\*2: QR chip is identical in shape and weight to the PB chip.

\*3: PB screw is for unbalance adjustment when using ID chip.

It is used in combination with PB chip.

★ Each chip is installed with adhesive.



## Smart Tool ID System

When installing chips by yourself after our shipping without the chips, please arrange for the following parts:

### ■ When installing ID chip

When arranging ID chip by yourself, please order the following parts from us:

Part name	Model
ID chip	(to be arranged by customer)
PB screw	9ID4 - P0.7-6
PB chip	9ID - BAL - CHIP

### ■ When installing QR chip

When using QR code, please order QR chip and PB chip from us.

Part name	Model
QR chip	9ID - QR - CHIP
PB chip	9ID - BAL - CHIP

\*When marking a QR code by yourself, please use the PB chip. A QR chip is a PB chip with the QR code engraved on it.

When ordering a QR chip-type tool holder or a QR chip as a stand-alone product, please provide us with a table data listing the contents to be engraved with a QR code.

### ■ When ordering a QR chip-type tool holder

No.	Product Model (example)	Engraving details (example)
1	HSK63A-C20-110-Q	0001
2	HSK63A-SK16-80P-Q	0002
3	HSK63A-SK16-80P-Q	0003
4	HSK63A-C20-85G-Q	0004
5	HSK63A...	0005

### ■ When ordering QR chip as a stand-alone product

No.	Engraving details (example)
1	0001
2	0002
3	0003
4	0004
5	0005

\* Please note that the NIKKEN eTOP tool management system is designed to engrave only numbers.

